



EPSILON DIGITAL

E-INVOICING

API SPECIFICATION DOCUMENTATION

AADE E-INVOICING

VERSION 3



EPSILON NET
GROUP OF COMPANIES

Contents

Versions.....	4
Solution.....	7
API Services.....	8
1. Authentication	8
1.1 Login.....	8
1.2 Refresh token.....	10
1.3 API User.....	11
2. AADE Provider API Calls.....	12
2.1 Request Payment.....	13
2.2 Invoice Transmission.....	16
2.3 Polling process status	20
2.4 Grant write access to Azure Storage	21
2.5 Verify upload to Azure Storage.....	23
2.6 Download files.....	24
2.7 Download publish logs (B2G only)	26
2.8 Submit Payment	28
2.9 Cancel Payment	30
2.10 Get Payments	32
2.11 Cancel.....	34
3. Point of Service Management.....	35
3.1 Set State.....	35
3.2 Assign Document	36
3.3 List	37
3.4 List Details.....	38
4. Order Forms	40
4.1 Connect Documents.....	40
5. Invoice Source Data analysis.....	41
5.1 Tax Authorities' & UBL2.1 configured in External System	42
5.2 Tax Authorities' & UBL2.1 configured in Epsilon Digital	54
5.3 Invoice Transmission to end customer.....	63

Appendix 1	64
Appendix 2	64
Appendix 3	65
Appendix 4	67
Appendix 5	70

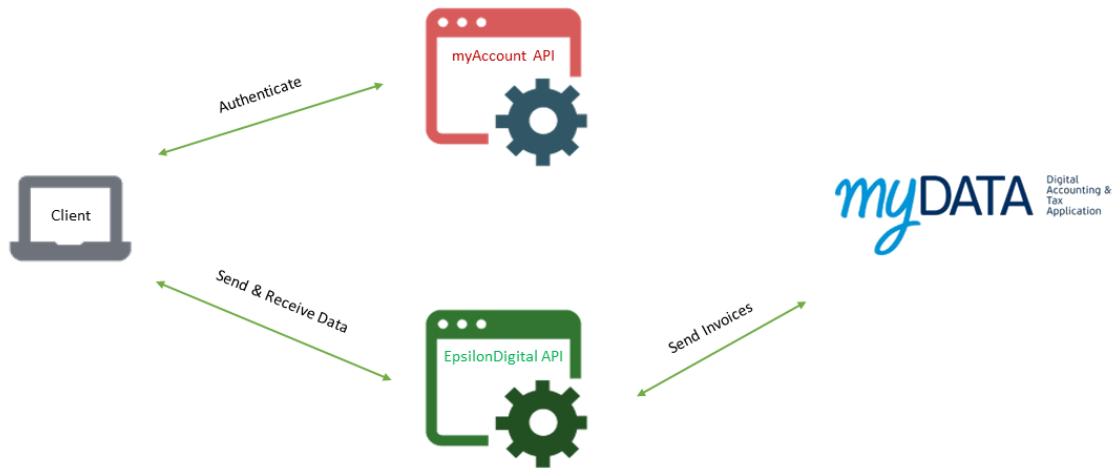
Versions

Version	Date	Changes
2.1.0	01.12.2021	
2.1.1	11.03.2022	2.6 Download files added
2.1.2	30.03.2022	Design enhancements
2.1.3	07.04.2022	Add method on each error code
2.1.4	15.04.2022	Add error category
2.1.5	27.06.2022	Counterpart email mandatory under specific conditions
2.1.6	13.10.2022	Add required fields for B2G Electronic Invoice Transmission
2.1.7	24.10.2022	url1 at Appendix 1
2.1.8	17.10.2023	Add "Download publish logs" and "B2G Validation Error Messages" (Appendix 4) documentation
2.1.9	24.10.2023	Add invoiceNote, organizationalUnitName, organizationalUnitCode in "Invoice Source Analysis"
3.0.0	14.03.2024	EFT-POS Payments Initial Implementation – RequestPayment/ SubmitPayment/ CancelPayment API calls
3.0.1	01.04.2024	Remove ProcessId from EFT-POS Payments related request models (RequestPayment/ SubmitPayment/ CancelPayment). Identify invoice by ExternalSystemId. Update missing payment response "status" field in documentation. Add missing B2G status values in documentation. Allow for dummy InvoiceAA upon pre-transmission payment request.
3.0.2	02.04.2024	Update transmission diagram to depict the EFT-POS payment transaction flow. New method GetPayments to retrieve all requested payments and their status.
3.0.3	10.04.2024	EFT-POS Payments: method Send extended with a new transmissionType (4) to allow requesting Provider's signature(s). Update transmission diagram to depict updated EFT-POS payment transaction flow. Update response models of methods Send and GetPayments to include UID and terminalId (values required by POS terminal). Update Tax Authorities' & UBL2.1 configured in External System and Tax Authorities' & UBL2.1 configured in Epsilon Digital with terminalId under paymentMethods.
3.0.4	18.04.2024	Update RequestPayment with nspCode input parameter.

		Add new Appendix 5, describing the allowed values on the nspCode field.
3.0.5	19.04.2024	Update Tax Authorities' & UBL2.1 configured in External System and Tax Authorities' & UBL2.1 configured in Epsilon Digital with nspCode under paymentMethods.
3.0.6	30.07.2024	New method SetState manages the Points of Service. Add description about Point Of Service to the section Invoice Transmission . Update Tax Authorities' & UBL2.1 configured in External System and Tax Authorities' & UBL2.1 configured in Epsilon Digital with point of service fields under invoiceHeader. Add a new code on the Appendix 5 . Fix erroneous label in api/Send example ("templatedIdentifier" updated to "identifier"). Update api/Send "identifier" input param to mandatory.
3.0.7	02.09.2024	Add B2G fields: BT-13, BT-16, BG-6(BT-41, BT-42, BT-43), BG-9(BT-56, BT-57, BT-58), BG-10(BT-59, BT-60, BT-61), BT-72, BG-14(BT-73, BT-74), BG-32(BT-160, BT-161)
3.0.8	06.09.2024	Add TerminalId in SubmitPayment paymentMethod input parameter.
3.0.9	11.09.2024	Update Appendix 5 with new supported NSP ePay (code 8)
3.0.10	26.09.2024	Update supported NSP codes in Appendix 5 codes (201, 202, 204, 10, 210, 11, 211, 12, 212, 13, 213, 214)
3.0.11	08.10.2024	Update/revert Appendix 5 EURONET codes; Code 2 description updated to original "WebECR" and 202 to "Common TCP Socket"
3.0.12	17.10.2024	Update Tax Authorities' & UBL2.1 configured in External System and Tax Authorities' & UBL2.1 configured in Epsilon Digital with consignment form fields Update 2.9 Cancel Payment to allow for Void (POS) payment cancellation.
3.0.13	07.11.2024	Update 3. Point of Service Management with 3.2 Assign Document and 3.3 List methods. Add vehicleNumber field and update itemCode description for B2G transmission (BT-155) in Tax Authorities' & UBL2.1 configured in External System and Tax Authorities' & UBL2.1 configured in Epsilon Digital . Add optional specialInvoiceCategory input parameter in 2.1 Request Payment .
3.0.14	10/01/2025	Update Appendix 5 with new supported NSP EveryPay (code 15).
3.0.15	16/01/2025	Update Download publish logs with new soft-reject status value. Add B2G fields: BT-71, BT-17, BT-19 and update field BT-16 Tax Authorities' & UBL2.1 configured in External System and Tax Authorities' & UBL2.1 configured in Epsilon Digital . Update Appendix 5 with new supported NSP NEXI WebECR (code 304).
3.0.16	06/02/2025	Add the automatic transmission with transmissionType = 5 in Invoice Transmission .
3.0.17	20/05/2025	Remove "OtherMeasurementUnitQuantity" and "OtherMeasurementUnitTitle"

		fields from Tax Authorities' & UBL2.1 configured in External System and Tax Authorities' & UBL2.1 configured in Epsilon Digital , as they will be obsoleted by greek tax authorities
3.0.18	22/05/2025	Add new method List Details for Point of Service Management.
3.0.19	30/06/2025	Updated List Details with date range paged filtering.
3.0.20	02/07/2025	Updated Appendix 3 with 00150004 and 00010077 error codes.
3.0.21	03/07/2025	Updated Appendix 3 with 00160000 error code.
3.0.22	09/07/2025	Add new section Order Forms with method Connect Documents . Add method Cancel in section 2. AADE Provider API Calls .
3.0.23	16/09/2025	Add new fields <code>exchangeRate</code> , <code>discountOption</code> , <code>discountAmount</code> , <code>correlatedInvoices/invoiceType</code> , <code>IsCancelling</code> in Tax Authorities' & UBL2.1 configured in External System and Tax Authorities' & UBL2.1 configured in Epsilon Digital .
3.0.24	21/10/2025	Removed section 5.4 Invoice Delayed Transmission, to align with the latest Tax Authorities requirements. Add new field <code>supplyAccountNo</code> in Tax Authorities' & UBL2.1 configured in External System and Tax Authorities' & UBL2.1 configured in Epsilon Digital .
3.0.25	27/11/2025	RequestPayment support for new externalPaymentId. Add new fields <code>reverseDeliveryNote</code> , <code>reverseDeliveryNotePurpose</code> , <code>ublAllowancesInTotals</code> and <code>externalPaymentId</code> in Tax Authorities' & UBL2.1 configured in External System and Tax Authorities' & UBL2.1 configured in Epsilon Digital
3.0.26	19/02/2026	Add new fields <code>endToEndReferenceld</code> , <code>group otherCorrelatedEntities</code> and <code>group packingsDeclarations</code> in Tax Authorities' & UBL2.1 configured in External System and Tax Authorities' & UBL2.1 configured in Epsilon Digital . Update Appendix 5 with new supported NSP Planet (code 16).
3.0.27	22/04/2026	Fix <code>otherCorrelatedEntities</code> structure and update <code>packingsDeclarations</code> to list in Tax Authorities' & UBL2.1 configured in External System and Tax Authorities' & UBL2.1 configured in Epsilon Digital .

Solution



The solution is based on API, which relies on the HTTP protocol and returns data in the JSON format. Requests are sent from the client in order to communicate with the server. For example, when a user wants to login with his credentials or send the invoice details. Then, a response is sent from the server to the client. This could for example be an authentication result.

Epsilon Digital provides two APIs where a client can directly communicate with through http requests. MyAccount API is responsible to authenticate the client and Epsilon Digital API consists of services that actual allow the user to send the invoices to AADE. Therefore, there are two end points one for the authentication server and one for Epsilon Digital API.

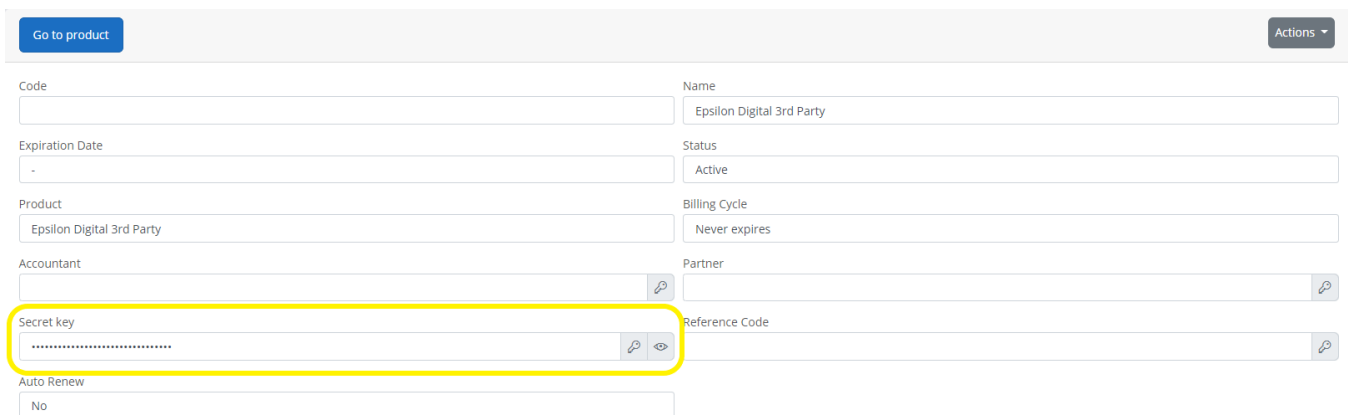
API Services

1. Authentication

Epsilon Digital API communicates with the authentication server of the system called myAccount. The identity server is responsible for generating the auth token necessary for all Epsilon Digital API methods. Therefore, there are two end points one for the authentication server and one for Epsilon Digital API.

1.1 Login

Login method is responsible for authenticating the user to the system and requires user's credentials as well as the activated subscription's secret key, as displayed in the screenshot below, which uniquely identifies and validates the user's access. Generates and returns the auth token (jwtoken), a refresh token and the subscription info of the user.



The screenshot shows a form with the following fields:

- Code**: Empty text input
- Expiration Date**: "-"
- Product**: "Epsilon Digital 3rd Party"
- Accountant**: Empty text input with a link icon
- Secret key**: Masked text input (highlighted with a yellow box) with a link icon and an eye icon to toggle visibility
- Auto Renew**: "No"
- Name**: "Epsilon Digital 3rd Party"
- Status**: "Active"
- Billing Cycle**: "Never expires"
- Partner**: Empty text input with a link icon
- Reference Code**: Empty text input with a link icon

Request

Method	URL
POST	/api/account/loginToSubscription

Parameter	Values	Description
subscriptionKey	string	Secret key of the user subscription.
Email	string	User's email.
password	string	User's password.

Response

Status	Response	Values	Description
200	jwt	string	The access token. Once the user is logged in, each subsequent request will include the jwt, allowing the user to access routes, services, and resources that are permitted with that token.
	jwtExpiration	DateTime	The expiration DateTime of the jwt.
	jwtRefreshToken	string	A refresh token that carries the information necessary to get a new access token. Whenever an access token is required to access a specific method, the client may use a refresh token to get a new access token issued by the authentication server.
	jwtRefreshTokenExpiration	DateTime	The expiration DateTime of the refresh token. The refresh token can also expire but are rather long-lived.
	url1	string	The base url of Epsilon Digital API.
400			When parameters are invalid.
403			If the username, password or secret key is invalid.

Example

REQUEST	POST /api/account/loginToSubscription
	<pre>{ "subscriptionKey": "1EE21B81418434A851E7AF0CED9B28C", "email": "user@epsilon.net.gr", "password": "123456" }</pre>
RESPONSE	HTTP/1.1 200 OK
	<pre>{ "jwt": "eyJhbGciOiJIUzI1NiIsInR5cCI6IkpXVCJ9.eyJodHRwOi8vc2NoZW1hcy54bWxzbnIyZm9yZy93cy8yMDA1LzA1L2lkZW50aXR5L2ltcy9uYW11Ijoiz2lvdGF2b3V0QGdtYWlsLmNvbSI6Imh0dHA6Ly9zY2h1bWZlLmNhbHNVYXAub3JnL3dzLzIwMDUvMDUvawRlbnRpdiaHRnRlbnRudE1kIjoizTktzMzdiYjctNTBhZC00ZGQzLWE3OTktMmQ5YjBlNTU0NDg4IiwiaWF0Ijoi2020-09-12T00:51:07Z", "jwtExpiration": "2020-09-12T00:51:07Z", "jwtRefreshToken": "ryRccc60ZRR4LVWTDfjX/MjwWIhuvb9/vsRRLG0gEm8=", "jwtRefreshTokenExpiration": "2020-10-21T21:51:07.9270559Z", "url1": "https://beta-epsilondigital.epsilon.net.gr" }</pre>

1.2 Refresh token

Whenever an access token is required to access a specific method, the client must check if this token has expired. If so, refresh method is called passing a refresh token and the expired jwt to the authentication server. The server generates both new access token (jwt) and refresh token with updated expiration date. In case the refresh token expires or whenever call to refresh method fails, the client has to authenticate again using the login method.

Request

Method	URL
POST	/api/token/refresh

Parameter	Values	Description
token	string	The expired jwt.
refreshToken	string	A valid refresh token.

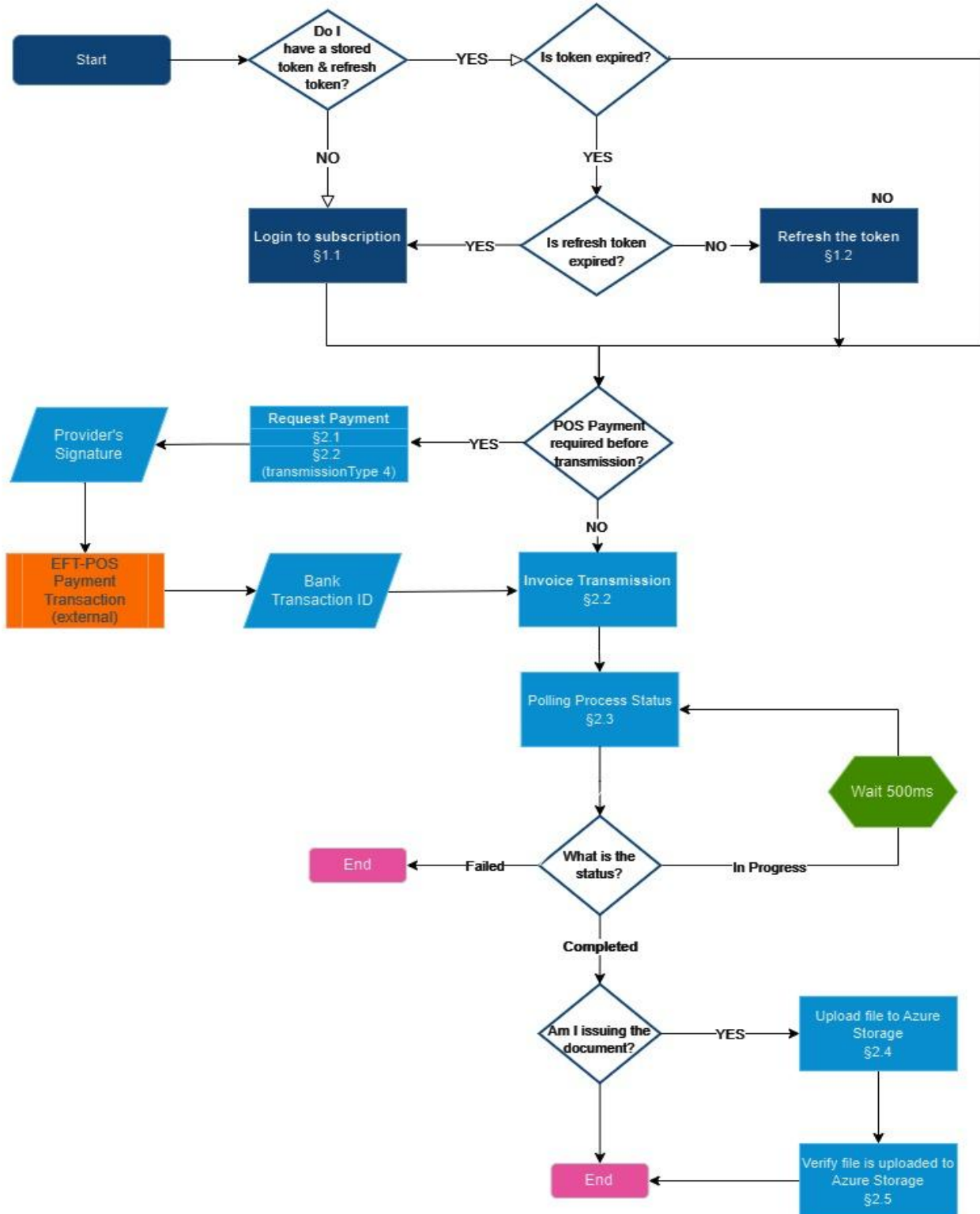
Response

Status	Response	Values	Description
200	jwt	string	The new access token.
	jwtExpiration	DateTime	The expiration DateTime of the jwt.
	jwtRefreshToken	string	The new refresh token.
	jwtRefreshTokenExpiration	DateTime	The expiration DateTime of the refresh token.
400			When parameters are invalid.
403			When either token or refresh token is invalid.

Example

REQUEST	POST /api/token/refresh
	<pre>{ "token": "eyJhbGciOiJIUzI1NiIsInR5cCI6IkpXVCJ9.eyJodHRwOi8vc2NoZW1hcy54bWxzbnI2FwLm9yZy93cy8yMDA1LzA1L2lkZW50aXR5L2NsYWltcy9uYW11Ijoiz21vdGF2b3V0QGdtYWlsLmNvbSI6Imh0dHA6Ly9zY2h1bWZzLnhtbHNvYXUub3JnL3dzLzIwMDUvMDUvaWR1bnRpdHkvYiYjctNTBhZC00ZGQzLWE3OTktMmQ5YjB1NTU0NDg4IiwibmJmIjojNTk5ODYxMDY3LCJleHUiOiJlOTk4NzE4NjcsIm1zcyI6ImHBzOi8vZGV2LmNyb251cyIsImF1ZCI6IkpueW9uZSJ9.qkkXG2cynfCofcbrqcxTIWIZ4mpOVqcB0kZEqi6-3Uo", "refreshToken": "ryRccc60ZRR4LVWTD/MjwWIhuvb9/vsRRLG0gEm8" }</pre>

2. AADE Provider API Calls



Epsilon Digital API provides a collection of methods for sending invoices to AADE Platform. All the following methods require authorization header using the Bearer scheme. The jwt returned by the [loginToSubscription](#) should be used to the authorization header. The url1 returned by the [loginToSubscription](#) is the base address to all below methods. For example, <https://beta-epsilondigital.epsilonnet.gr>.

As of version 3.0, every call to the API must denote the desired API version in the HTTP header, under key X-Version.

Provider API calls can be found on {url1}/swagger, under definition **Epsilon Digital API v3**. For example, <https://beta-epsilondigital.epsilonnet.gr/swagger>.

2.1 Request Payment

Invoice transmissions involving EFT-POS payments, require a Provider's signature, verifying the POS payment, to be committed to the final POS terminal for the bank transaction to be completed. This method natively precedes invoice transmission (API method [Send](#)) in the transmission flow ^[1].

The returned Provider's signature must be included in the source invoice as presented in [5.1 Tax Authorities' & UBL2.1 configured in External System](#) and [5.2 Tax Authorities' & UBL2.1 configured in Epsilon Digital](#) under the element [paymentMethods](#).

NOTE: Invoking the RequestPayment method before transmitting the invoice, is required only if any payment methods with an EFT-POS payment type are defined in the invoice source.

Request

Method	URL
POST	/api/requestPayment
HTTP Header	Key: X-Version Value: 3.0 <i>*required</i>

Parameter	Values	Description
externalSystemId	string	An identifier of the invoice specified by the client. Each invoice is validated based on its status and this external ID. For example a successfully transmitted invoice with the same external ID is not allowed to be re-transmitted.
externalPaymentId	string	An identifier of the payment specified by the client. <u>Only</u> for request <u>without</u> using externalSystemId

¹ In the case of [2.8 Submit Payment](#), the RequestPayment API call will be invoked **after** invoice transmission.

issuerVatNumber	string	Issuer's TIN (VAT Number)
invoiceIssueDate	dateTime	Invoice Date ISO 8601
companyBranch	number	Issuer's Company Branch N/A as registered in Tax Authorities' platform
invoiceType	string	Invoice Type according to Tax Authorities' documentation
invoiceSeries	string	Series Code of Invoice issued, use to resolve invoice type.
invoiceAA	string	Invoice Number.
mark [optional]	long	Unique registration number of the invoice provided by AADE, if available. Required only in 2.8 Submit Payment scenario.
netValue	decimal	Invoice total net value
vatAmount	decimal	Invoice total vat amount
totalValue	decimal	Invoice total gross value
paymentAmount	decimal	Amount to be paid through the EFT-POS transaction
terminalId	string	The Id of the EFT-POS terminal that will perform the payment transaction
specialInvoiceCategory [optional]	number	Special invoice category as defined by Tax Authorities' documentation. Required only for payment requests issued by restaurant (catering) businesses (value 12)
nspCode	string	Code identifier of the EFT-POS service provider. Values described in Appendix 5 .

Response

Status	Response	Values	Description
200	externalSystemId	string	The external identifier provided to requestPayment method.
	processId	guid	The identifier of the invoice generated by Epsilon Digital Platform. Will be null until the actual transmission is performed, through the Send method
	uid	string	Identifier of the invoice required for the signature generation and for completing the EFT-POS payment.
	paymentToken	timestamp	Datetime

	signature	string	The payment signature generated by Epsilon Digital Provider
	amount	decimal	The requested payment amount
	signatureClearText	string	The clear text used to generate the payment signature
	status	number	The progress status of the procedure. Completed = 1, Failed = 2.
	errorCode	string	In case invoice upload fails, errorCode indicates the type of the error.
	errorMessage	string	Detailed description of the error.
	errorCategory	string	Indicates the category of the error. TED = Technical error by EpsilonDigital BED = Business error by EpsilonDigital TTA = Technical error by Tax Authorities BTA = Business error by Tax Authorities
401			Unauthorized request. The jwt is either invalid or expired.

Example

REQUEST	POST /api/requestPayment
<pre>{ "externalSystemId": "bcadd6ae-e8a6-5r84-g3da-23cbb7vs764k", "issuerVatNumber": "099788256", "invoiceIssueDate": "2024-03-13T14:22:22", "companyBranch": "0", "invoiceType": "1.1", "invoiceSeries": "TΔA", "invoiceAA": "32476", "netValue": 2628.38, "vatAmount": 630.81, "totalValue": 3259.19, "paymentAmount": 3259.19, "terminalId": "01234567", "nspCode": "3" }</pre>	
RESPONSE	HTTP/1.1 200 OK
<pre>{ "processId": null, "externalSystemId": "bcadd6ae-e8a6-5r84-g3da-23cbb7vs764k", "uid": "string", "paymentToken": { "timestamp": "2024-03-13T12:20:20.700Z", "signature": "6B42CBC7C1CC02724095E6169F17819D[...]75E49FBB90E9FFA4D22944B2BBC02F1E27CFE57C8", "amount": 3259.19, "signatureClearText": "string" } }</pre>	

```

    },
    "status": 1,
    "errorCategory": null,
    "errorCode": null,
    "errorMessage": null
  }

```

RESPONSE	HTTP/1.1 401 Unauthorized
----------	---------------------------

```
{}
```

2.2 Invoice Transmission

Epsilon Digital Platform API provides the send method for more than one transmissions. The required property `transmissionType` resolves the type of the transmission, thus the invoice transmission is responsible to send the invoice data to Epsilon Digital Platform, for Epsilon Digital to certify invoice's content and transmit it to AADE platform.

When issuing the invoice's pdf document is required the parameter `transmissionType` is set to value 1. In this case, the design of at least one print form is required. The design of the print form can be configured through Epsilon Digital Platform.

Alternatively, automatic transmission of documents, without PDF creation, is available when `transmissionType` is set to value 5. In this case, user may export to PDF the default HTML view of the invoice through the Provider's public viewer page.

An alternative approach to [2.1 Request Payment](#), for getting the Provider's signature(s) required to complete EFT-POS payment transactions, is available by setting the parameter `transmissionType` to value 4. Under this setting, Epsilon Digital will return a list of payment tokens for each one of the payment methods specified for EFT-POS payment without transmitting the invoice to AADE platform.

In the case of Order Forms, the Points of Service and the flow of the actions (opening, closing, cancelation) are determined, in order to manage the Order Forms. Epsilon Digital exclusively manages the Points of Service, refer [3. Point of Service Management](#).

Request

Method	URL
POST	/api/send
HTTP Header	Key: X-Version Value: 3.0 *required

Parameter	Values	Description	
<code>externalSystemId</code>	string	An identifier of the invoice specified by the client. Each invoice is validated based its status and this external ID. For example a signed invoice with the same external ID is not allowed to resend.	
<code>source</code>	string	Json serialized object that contains the data to be send. See section 5. Invoice Source Data analysis	
<code>identifier</code>	string	The identifier of the template used to map the incoming invoice data to the model required by AADE Provider. This value is specified through UI configuration.	
<code>transmissionType</code> [optional]	Number	Resolves the required type of transmission. 0 - transmits invoice to Tax Authorities Platform. 1 - transmits invoice to Tax Authorities Platform and generates invoice PDF file. 4 - generates Provider's signature(s) without transmitting invoice to Tax Authorities Platform. (Default Value = 0) 5 - transmits and autocompletes invoice to Tax Authorities Platform without PDF creation.	
<code>attachments</code> [optional]	<code>content</code> [optional]	string	Base64 encoded binary data. A draft .txt file of the invoice. It is the base64 representation string of the byte array of the file.

Response

Status	Response	Values	Description	
200	<code>externalSystemId</code>	string	The external identifier provided to send method.	
	<code>processId</code>	guid	The identifier of the invoice generated by Epsilon Digital Platform.	
	<code>signing</code>	<code>uid</code>	string	Identifier of the invoice provided by AADE.
		<code>mark</code>	long	Unique registration number of the invoice provided by AADE.
		<code>authenticationCode</code>	string	Authentication code of the invoice provided by AADE.
		<code>qrCode</code>	string	The url where the client can see the invoice and download its files produced by the system.
<code>pdfUploaded</code>		Boolean	Specifies whether the pdf of the invoice is uploaded or not.	

		pdfFileUrl	string	Epsilon Digital Azure storage url with read rights to download the invoice pdf file.
		publishStatus	number	The status of the B2G invoice transmission. Applies only to B2G invoices. Pending = 0, Sending = 1, Transmitted = 2, Processing = 3, Paid = 4, Rejected = 5, UnderQuery = 6, Failed = 10
		paymentTokens	array	Requested payments in Pending state
		timestamp	Datetime	The timestamp of signature creation in Greek time zone format
		signature	string	The payment signature generated by Epsilon Digital Provider
		amount	decimal	The requested payment amount
		terminalId	string	The Id of the EFT-POS terminal that will perform the payment transaction
		uid	string	Identifier of the invoice required for the signature generation and for completing the EFT-POS payment.
		timestamp	DateTime	The timestamp of invoice creation in UTC
		status	number	The progress status of the procedure. InProgress = 0, Completed = 1, Failed = 2.
		errorSeverity	number	Warning = 1, Error = 2.
		errorCode	string	In case invoice upload fails, errorCode indicates the type of the error.
		errorMessage	string	Detailed description of the error.
		errorCategory	string	Indicates the category of the error. TED = Technical error by EpsilonDigital BED = Business error by EpsilonDigital TTA = Technical error by Tax Authorities BTA = Business error by Tax Authorities
401				Unauthorized request. The jwt is either invalid or expired.



Example

REQUEST	POST /api/send
<pre>{ "externalSystemId": "185", "identifiant": " eInvoicing", "transmissionType": 0, "source": {} }</pre>	
RESPONSE	HTTP/1.1 200 OK
<pre>{ "processId": "fe340fa6-444a-4ce7-1a71-08d9c47b8688", "externalSystemId": "185", "signing": { "uid": null, "mark": null, "authenticationCode": null, "qrCode": "https://localhost:6001/FileDocument/Get/fe340fa6-444a-4ce7-1a71-08d9c47b8688", "pdfUploaded": false, "pdfFileUrl": null, "publishStatus": 0, "paymentTokens": [{ "timestamp": "2024-03-13T12:20:20.700Z", "signature": "6B42CBC7C1CC02724095E6169F178[...]49FBB90E9FFA4D22944B2BBC02F1E27CFE57C8", "amount": 3259.19, "terminalId": "1234567890", "uid": "14BFA565194F552B3A3462DE07A48B2E24484BC1" }] }, "status": 0, "errorCategory": null, "errorCode": null, "errorSeverity": null, "errorMessage": null, "timeStamp": "2024-03-13T14:15:06.6338557Z", }</pre>	
RESPONSE	HTTP/1.1 401 Unauthorized
<pre>{}</pre>	

2.3 Polling process status

Send method will return the initial status of the process along with Epsilon Digital's unique processId. While the status is InProgress, the client should keep calling the Get method by passing either system external identifier or Epsilon Digital's unique processId.

Request

Method	URL
POST	/api/get
HTTP Header	Key: X-Version Value: 3.0 *required

Parameter	Values	Description
processId ^[1] [optional]	Guid	Epsilon Digital's unique processId as returned by api/send.
externalSystemId ^[1] [optional]	string	The external identifier provided as input to api/send method

[1] At least one of the above should be defined

Response

The same response with /api/send.

Example

REQUEST	POST api/get
	<pre>{ "externalSystemId": "185" }</pre>
RESPONSE	HTTP/1.1 200 OK
	<pre>{ "processId": "fe340fa6-444a-4ce7-1a71-08d9c47b8688", "externalSystemId": "185", "signing": { "uid": "19D8A9187F64B2D1DBD2D91C7908A1D8A4F94FB6", "mark": 400001859268171, "authenticationCode": "71B069FE6AFF018DD3073011F478EEA172E58546", "qrCode": "https://localhost:6001/FileDocument/Get/fe340fa6-444a-4ce7-1a71-08d9c47b8688", "pdfUploaded": false, "pdfFileUrl": null, "publishStatus": 0, "paymentTokens": [{ "timestamp": "2024-03-13T12:20:20.700Z ", "signature": "6B42CBC7C1CC02724095E6169F178[...]49FBB90E9FFA4D22944B2BBC02F1E27CFE57C8", "amount": 3259.19 }] } }</pre>

```

    ]
  },
  "status": 1,
  "timeStamp": "2024-03-13T14:15:08.6338557Z",
  "errorCategory": null,
  "errorCode": null,
  "errorSeverity": null,
  "errorMessage": null
}

```

2.4 Grant write access to Azure Storage

When an invoice has successfully been transmitted to AADE and only when the client is responsible for generating invoice's pdf file, the following process must be followed. The client must create the pdf file of the invoice and request for a shared access signature (SAS) to grand limited access to Azure Storage and therefore upload the file there.

Request

Method	URL
POST	/api/uploadFileRequest
HTTP Header	Key: X-Version Value: 3.0 *required

Parameter	Values	Description
<code>processId</code> ^[1] [optional]	guid	Epsilon Digital's unique <code>processId</code> as returned by <code>api/send</code> .
<code>externalSystemId</code> ^[1] [optional]	number	The external identifier provided as input to <code>api/send</code> method
<code>fileName</code>	string	The name of the pdf file.
<code>fileSize</code>	number	The size in bytes of the pdf file.

[1] At least one of the above should be defined

Response

Status	Response	Values	Description
200	uploadUrl	string	Azure storage url. ^[2]
	status	number	Status of the upload request. Success =1, Failed =2
	errorCode	string	In case upload request fails, errorCode indicates the type of the error.
	errorMessage	string	Detailed description of the error.
	errorCategory	string	Indicates the category of the error. TED = Technical error by EpsilonDigital BED = Business error by EpsilonDigital TTA = Technical error by Tax Authorities BTA = Business error by Tax Authorities
401			Unauthorized request. The jwt is either invalid or expired.

Example

REQUEST	POST /api/uploadFileRequest
	<pre>{ "externalSystemId": "185", "fileName": "Invoice.pdf", "fileSize": 33564 }</pre>
RESPONSE	HTTP/1.1 200 OK
	<pre>{ "uploadurl": "url", "status": 1, "errorCode": null, "errorCategory": null, "errorMessage": null }</pre>

² Use the Azure storage url to send a new PUT httpRequest ([See here](#)).

Request Syntax: PUT <uploadurl> HTTP/1.1

Request Headers: Content-Type: application/pdf
x-ms-blob-type: BlockBlob

Request Body: Content of pdf file as binary

2.5 Verify upload to Azure Storage

After client completing the file's upload to Azure Storage, this method should be called for Epsilon Digital to verify file's content and complete the process.

Request

Method	URL
POST	api/Finalize
HTTP Header	Key: X-Version Value: 3.0 *required

Parameter	Values	Description
<code>processId</code> ^[1] [optional]	Guid	Epsilon Digital's unique processId as returned by api/send.
<code>externalSystemId</code> ^[1] [optional]	string	The external identifier provided as input to api/send method

[1] At least one of the above should be defined

Response

Status	Response	Values	Description
200	<code>status</code>	number	Status of the verify request. Success =1, Failed =2
	<code>errorCode</code>	string	In case verify request fails, errorCode indicates the type of the error.
	<code>errorMessage</code>	string	Detailed description of the error.
	<code>errorCategory</code>	string	Indicates the category of the error. TED = Technical error by EpsilonDigital BED = Business error by EpsilonDigital TTA = Technical error by Tax Authorities BTA = Business error by Tax Authorities
401			Unauthorized request. The jwt is either invalid or expired.

Example

REQUEST	POST /api/Finalize
<pre>{ "externalSystemId": "185" }</pre>	
RESPONSE	HTTP/1.1 200 OK
<pre>{ "status": 1, "errorCode": null, "errorCategory": null, "errorMessage": null }</pre>	

2.6 Download files

When the whole process has been successfully completed, the client can therefore download all the files uploaded, at any time. The request returns download urls of the pdf uploaded by the client, together with the actual xml file transmitted to Tax Authorities' and the e-Invoice for PEPPOL.

Request

Method	URL
POST	api/getFiles
HTTP Header	Key: X-Version Value: 3.0 <i>*required</i>

Parameter	Values	Description
<code>processId</code> ^[1] [optional]	Guid	Epsilon Digital's unique processId as returned by api/send.
<code>externalSystemId</code> ^[1] [optional]	string	The external identifier provided as input to api/send method
<code>fileIdentifiers</code> [optional]	array	List of file identifiers. If empty, all files are returned. Accepted values: <ul style="list-style-type: none"> pdf for invoice pdf, mydataxml for Tax Authorities xml file, invoicexml for PEPPOL xml file

[1] At least one of the above should be defined

Response

Status	Response	Values	Description
200	files	downloadUrl	string Azure storage url. ^[3]
		fileName	string Name of the file uploaded
	status	number	Status of the request. Success =1, Failed =2
	errorCode	string	In case verify request fails, indicates the type of the error.
	errorMessage	string	Detailed description of the error.
	errorCategory	string	Indicates the category of the error. TED = Technical error by EpsilonDigital BED = Business error by EpsilonDigital TTA = Technical error by Tax Authorities BTA = Business error by Tax Authorities
401			Unauthorized request. The jwt is either invalid or expired.

Example

REQUEST	POST /api/getFiles
<pre>{ "externalSystemId": "185" }</pre>	
RESPONSE	HTTP/1.1 200 OK

³ Use the Azure storage url to send a new GET http request ([See here](#)).

Request Syntax: GET <downloadUrl> HTTP/1.1

```

"files": [
  {
    "downloadUrl": "url",
    "fileName": "myDataXML.xml"
  },
  {
    "downloadUrl": "url",
    "fileName": "eInvoiceXML.xml",
    "fileIdentifier": "eInvoiceXML"
  },
  {
    "downloadUrl": "url",
    "fileName": "invoice",
    "fileIdentifier": "PDF"
  }
],
"status": 1,
"errorCode": null,
"errorMessage": null,
"errorCategory": null

```

2.7 Download publish logs (B2G only)

When the invoice publish type is B2G (2) and the whole process has been successfully completed, the client can download all the logs of the publish process, at any time. The request returns a response status success indicator, together with a list of publish logs.

Request

Method	URL
POST	api/GetPublishLogs
HTTP Header	Key: X-Version Value: 3.0 *required

Parameter	Values	Description
processId ^[1] [optional]	Guid	Epsilon Digital's unique processId as returned by api/send.
externalSystemId ^[1] [optional]	string	The external identifier provided as input to api/send method

[1] At least one of the above should be defined

Response

Status	Response	Values	Description	
200	publishLogs	message	string	Publish log entry detailed message. Possible error messages described in Appendix 4 .
		status	number	Publish log entry status. Values and aliases: Pending = 0 AB = 1 (e-Invoice received by KE.D.) AP = 2 (Accepted) RE = 3 (Rejected) IP = 4 (In Process) UQ = 5 (Under Query) CA = 6 (Conditionally Accepted) PD = 7 (Paid) SR = 50 (Soft Rejected) As described in Peppol BIS v3 UNCL4343 Subset (except for SR).
		timestamp	datetime	The log entry timestamp.
	status	number	Status of the request. Success =1, Failed =2	
	errorCode	string	In case request fails, indicates the type of the error.	
	errorMessage	string	Detailed description of the error.	
	errorCategory	string	Indicates the category of the error. TED = Technical error by EpsilonDigital BED = Business error by EpsilonDigital TTA = Technical error by Tax Authorities BTA = Business error by Tax Authorities	
401			Unauthorized request. The jwt is either invalid or expired.	

Example

REQUEST	POST /api/GetPublishLogs
<pre>{ "externalSystemId": "185" }</pre>	
RESPONSE	HTTP/1.1 200 OK
<pre>{ "publishLogs": [{ "message": "Το Ηλεκτρονικό Τιμολόγιο έχει δρομολογηθεί προς αποστολή στην Αναθέτουσα αρχή", "status": 0, }] }</pre>	

```

        "timestamp": "2023-09-11T11:15:34.5998309"
    },
    {
        "message": "Παραλαβή από ΚΕΔ",
        "status": 1,
        "timestamp": "2023-09-11T11:15:39.2524312"
    }
],
"status": 1,
"errorCode": null,
"errorMessage": null,
"errorCategory": null
}

```

2.8 Submit Payment

Besides the requirement for a Provider's Signature upon invoice transmission with EFT-POS payment method specified, there also might be cases of EFT-POS payments occurring after the invoice transmission.

In order to handle such post-transmission EFT-POS payment requirements, Epsilon Digital Platform API introduces a new API method, namely [SubmitPayment](#), which natively follows invoice transmission (API method [Send](#)) in the transmission flow. The method invocation must be combined with the [RequestPayment](#) method, so as to get the required Provider's Signature that verifies the payment at the POS terminal.

Thus, before invoking the [SubmitPayment](#) method, the user must first invoke the [RequestPayment](#) method to get the required payment token info (signature, timestamp, amount, uid). When the [RequestPayment](#) occurs after invoice transmission, the "mark" input parameter is considered required and must not be undefined.

Refer to [2.1 Request Payment](#) for completing the first step required to proceed with [SubmitPayment](#) method.

Request

Method	URL
POST	/api/submitPayment
HTTP Header	Key: X-Version Value: 3.0 *required

Parameter	Values	Description
externalSystemId	string	The external identifier provided to "send" or "requestPayment" method.

mark		long	Unique registration number of the invoice provided by AADE.
paymentInfo		array	
	type	number	Payment method type code. At least one entry must be of type EFT-POS (type=7)
	amount	decimal	Payable amount for the payment type specified
	paymentMethodInfo [optional]	string	Text description for specified payment
	tipAmount [optional]	decimal	An optional extra amount paid through the EFT-POS transaction as a tip. Applicable only for payment method type EFT-POS (type=7)
	transactionId	string	Bank transaction identifier returned by the POS terminal. Required only for payment method type EFT-POS (type=7)
	signature	string	Epsilon Digital Provider payment signature returned by RequestPayment method. Required only for payment method type EFT-POS (type=7)
	terminalId	string	The Id of the EFT-POS terminal that performed the payment transaction

Response

Status	Response	Values	Description
200	externalSystemId	string	The external identifier provided to "send" or "requestPayment" method.
	processId	guid	The identifier of the invoice generated by Epsilon Digital Platform.
	paymentMark	string	Unique registration number of the submitted payment provided by AADE.
	status	number	The progress status of the procedure. InProgress = 0, Completed = 1, Failed = 2.
	errorCode	string	In case invoice upload fails, errorCode indicates the type of the error.
	errorMessage	string	Detailed description of the error.
	errorCategory	string	Indicates the category of the error. TED = Technical error by EpsilonDigital BED = Business error by EpsilonDigital TTA = Technical error by Tax Authorities

			BTA = Business error by Tax Authorities
401			Unauthorized request. The jwt is either invalid or expired.

Example

REQUEST	POST /api/submitPayment
<pre>{ "mark": 400000018449479, "externalSystemId": "bcadd6ae-e8a6-5r84-g3da-23cbb7vs7641", "paymentInfo": [{ "type": 7, "amount": 100, "paymentMethodInfo": "", "tipAmount": 0, "transactionId": "1234567890987654326", "signature": "6B42CBC7C1CC02724095E6169F178[...]006D75E49FBB90E9FFA4D22944B2BBC02F1E27CFE57C8", "terminalId": "1234567890" }] }</pre>	
RESPONSE	HTTP/1.1 200 OK
<pre>{ "processId": "3fa85f64-5717-4562-b3fc-2c963f66afa6", "externalSystemId": "bcadd6ae-e8a6-5r84-g3da-23cbb7vs7641", "paymentMark": 400001923846602, "status": 1, "errorCategory": null, "errorCode": null, "errorMessage": null }</pre>	
RESPONSE	HTTP/1.1 401 Unauthorized
<pre>{}</pre>	

2.9 Cancel Payment

This API method allows for cancelling

- a requested payment token not been used in a bank transaction. E.g. user decides that this token is no longer needed
- a completed payment cancelled in the POS terminal (VOID). TransactionId and VoidTransactionId are required in the request parameters.

Request

Method	URL
POST	/api/cancelPayment
HTTP Header	Key: X-Version Value: 3.0 *required

Parameter	Values	Description
externalSystemId	string	The external identifier provided to "send" or "requestPayment" method.
signature	string	Epsilon Digital Provider payment signature that will be cancelled.
transactionId [optional]	string	Bank transaction identifier returned by the POS terminal for the completed payment requested to be cancelled. Required only when cancelling a completed payment.
voidTransactionId [optional]	string	Payment cancellation identifier as returned by the POS terminal. Required only when cancelling a completed payment.

Response

Status	Response	Values	Description
200	externalSystemId	string	The external identifier provided to "requestPayment" method.
	processId	guid	The identifier of the invoice generated by Epsilon Digital Platform.
	signature	string	Epsilon Digital Provider payment signature.
	status	number	The progress status of the procedure. Completed = 1, Failed = 2.
	errorCode	string	In case invoice upload fails, errorCode indicates the type of the error.
	errorMessage	string	Detailed description of the error.
	errorCategory	string	Indicates the category of the error. TED = Technical error by EpsilonDigital BED = Business error by EpsilonDigital TTA = Technical error by Tax Authorities BTA = Business error by Tax Authorities
401			Unauthorized request. The jwt is either invalid or expired.

Example

REQUEST	POST /api/cancelPayment
<pre>{ "externalSystemId": "bcadd6ae-e8a6-5r84-g3da-23cbb7vs7641", "signature": "6B42CBC7C1CC02724095E6169F178[...]006D75E49FBB90E9FFA4D22944B2BBC02F1E27CFE57C8" }</pre>	
RESPONSE	HTTP/1.1 200 OK
<pre>{ "processId": "3fa85f64-5717-4562-b3fc-2c963f66afa6", "externalSystemId": "bcadd6ae-e8a6-5r84-g3da-23cbb7vs7641", "signature": "6B42CBC7C1CC02724095E6169F178[...]006D75E49FBB90E9FFA4D22944B2BBC02F1E27CFE57C8", "status": 1, "errorCategory": null, "errorCode": null, "errorMessage": null }</pre>	
RESPONSE	HTTP/1.1 401 Unauthorized
<pre>{}</pre>	

2.10 Get Payments

At any time, during or after the transmission process, the user may invoke this method to get all payment requests for a given invoice external identifier and their related info.

Request

Method	URL
GET	/api/getPayments/ <i>externalSystemId</i>
HTTP Header	Key: X-Version Value: 3.0 <i>*required</i>

Parameter	Values	Description
<i>externalSystemId</i>	string	The external identifier provided to "send" or "requestPayment" method.

Response

Status	Response	Values	Description
200	<i>externalSystemId</i>	string	The external identifier provided to

			"getPayments" method.
	payments	array	
	signature	string	Epsilon Digital Provider payment signature.
	timestamp	datetime	Provider's Signature creation timestamp.
	amount	decimal	The payable amount bound to the signature.
	status	number	Payment request status. Pending = 0, Completed = 1, Cancelled = 2, PendingTransmission = 3, ^[4] Expired = 10
	transactionId	String	Bank transaction identifier returned by the POS terminal.
	tipAmount	decimal	Optional tip amount paid during the EFT-POS transaction.
	paymentMark	long	Unique registration number of the submitted payment provided by AADE. ^[4]
	terminalId	string	The Id of the EFT-POS terminal that will perform the payment transaction
	uid	string	Identifier of the invoice required for the signature generation and for completing the EFT-POS payment.
	status	number	The progress status of the procedure. Completed = 1, Failed = 2.
	errorCode	string	In case invoice upload fails, errorCode indicates the type of the error.
	errorMessage	string	Detailed description of the error.
	errorCategory	string	Indicates the category of the error. TED = Technical error by EpsilonDigital BED = Business error by EpsilonDigital TTA = Technical error by Tax Authorities BTA = Business error by Tax Authorities
401			Unauthorized request. The jwt is either invalid or expired.

⁴ Available only when payment is submitted via [2.8 Submit Payment](#)

Example

REQUEST	GET /api/getPayments/bcadd6ae-e8a6-5r84-g3da-23cbb7vs764l
RESPONSE	HTTP/1.1 200 OK
	<pre>{ "errorCategory": "string", "errorCode": "string", "errorMessage": "string", "status": 1, "externalSystemId": "bcadd6ae-e8a6-5r84-g3da-23cbb7vs764l", "payments": [{ "timestamp": "2024-04-02T18:23:29.261Z", "signature": "6B42CBC7C1CC02724095E6169F178[...]006D75E49FBB90E9FFA4D22944B2BBC02F1E27CFE57C8", "amount": 100, "status": 1, "transactionId": "string", "tipAmount": 0, "paymentMark": 0, "terminalId": "1234567890", "uid": "14BFA565194F552B3A3462DE07A48B2E24484BC1" }] }</pre>
RESPONSE	HTTP/1.1 401 Unauthorized
	{}

2.11 Cancel

The Cancel method is used to cancel a Delivery Note that has been submitted. It cannot be used for other types of documents except for type 9.3 Delivery Note

Method	URL
POST	api/Cancel
HTTP Header	Key: X-Version Value: 3.0 <i>*required</i>

Parameter	Values	Description
mark ^[1] [optional]	Long	Mark of Delivery Note
externalSystemId ^[1] [optional]	string	The external identifier provided as input to api/send method

[1] At least one of the above should be defined

Response

Status	Response	Values	Description
200	cancellationMark	string	Cancellation mark of Delivery Note as returned by AADE.
	status	number	The progress status of the procedure. Completed = 1, Failed = 2.
	errorCategory	String	Indicates the category of the error. TED = Technical error by EpsilonDigital BED = Business error by EpsilonDigital TTA = Technical error by Tax Authorities BTA = Business error by Tax Authorities
	errorCode	string	In case invoice upload fails, errorCode indicates the type of the error.
	errorMessage	string	Detailed description of the error.
401			Unauthorized request. The jwt is either invalid or expired.

3. Point of Service Management

The order form is a type of document addressed to restaurant businesses and the Point of Service must be indicated. Consequently, Points of Service management and monitoring is mandatory.

3.1 Set State

Epsilon Digital, using the SetState method, manages the Points of Service. Actions related to the Points of Service are: open, close and transfer to another Point of Service.

Request

Method	URL
POST	api/pointOfService/SetState
HTTP Header	Key: X-Version Value: 3.0 *required

Parameter	Values	Description
companyBranchCode	number	Company Branch N/A as registered in Tax Authorities' platform.
pointOfService	string	The name of Point of Service to change.

targetPointOfService	string	The name of Point of Service to transfer, in the transfer and merge case.
actionKind	number	Point of Service action kinds. 0 = Open 1 = Close 2 = Transfer

Response

Status	Response	Values	Description
200	success	string	Status of the verify request. true = Success, false = failure.
	errorCategory	String	Indicates the category of the error. TED = Technical error by EpsilonDigital BED = Business error by EpsilonDigital TTA = Technical error by Tax Authorities BTA = Business error by Tax Authorities
	errorCode	string	In case invoice upload fails, errorCode indicates the type of the error.
	errorMessage	string	Detailed description of the error.
401			Unauthorized request. The jwt is either invalid or expired.

3.2 Assign Document

API method used to assign Point of Service and related transactions to a transmitted invoice in order to allow closing the Point of Service.

Request

Method	URL
POST	api/pointOfService/AssignDocument
HTTP Header	Key: X-Version Value: 3.0 *required

Parameter	Values	Description
companyBranchCode	string	Company Branch N/A as registered in Tax Authorities' platform.
pointOfService	string	The name of Point of Service to change.
processId	string	The identifier of the invoice generated by Epsilon Digital Platform.

<code>externalSystemId</code>	string	An identifier of the invoice specified by the client.
-------------------------------	--------	---

Response

Status	Response	Values	Description
200	<code>success</code>	string	Status of the verify request. true = Success, false = failure.
	<code>errorCategory</code>	String	Indicates the category of the error. TED = Technical error by EpsilonDigital BED = Business error by EpsilonDigital TTA = Technical error by Tax Authorities BTA = Business error by Tax Authorities
	<code>errorCode</code>	string	In case invoice upload fails, <code>errorCode</code> indicates the type of the error.
	<code>errorMessage</code>	string	Detailed description of the error.
401			Unauthorized request. The jwt is either invalid or expired.

3.3 List

API method used to return a list of Points of Service and their balance for a given company branch code. Since the length of the returned data (list) may be too large, paging is applied on the response by using the `refNumber` input parameter and restricting list length to 50 records. `RefNumber` is a unique serial number applied to registered Points of Service inside Epsilon Digital and may be used as the starting point for getting the next 50 desired results.

Request

Method	URL
POST	<code>api/pointOfService/List</code>
HTTP Header	Key: X-Version Value: 3.0 <i>*required</i>

Parameter	Values	Description
<code>companyBranchCode</code>	string	Company Branch N/A as registered in Tax Authorities' platform.
<code>refNumber</code>	number	The unique serial number which will be used as the starting point of the returned results. Minimum value 1.



Response

Status	Response	Values	Description
200	success	string	Status of the verify request. true = Success, false = failure.
	data	array	List of Point of Service info
	pointOfService	string	The name of the Point of Service
	balance	decimal	The remaining balance of the Point of Service
	refNumber	Number	The refNumber of this Point of Service record. Increment latest received refNumber by one (1) to fetch next paged list result.
	errorCategory	string	Indicates the category of the error. TED = Technical error by EpsilonDigital BED = Business error by EpsilonDigital TTA = Technical error by Tax Authorities BTA = Business error by Tax Authorities
	errorCode	string	In case invoice upload fails, errorCode indicates the type of the error.
	errorMessage	string	Detailed description of the error.
401			Unauthorized request. The jwt is either invalid or expired.

3.4 List Details

API method similar to pointOfService/List. Includes invoice details for easier Point of Service management and supports filtering by open Points of Service or by open (not-connected) Order Forms. Requested data may be retrieved using the following approaches:

- refNumber: Unique serial number which will be used as the starting point of the returned results.
- From/to (with page): Datetime input params defining the timespan into which the search will be applied. Must be combined with the Page input param which defines the paged result to be returned for the requested timespan (from/to).

Paging size is 10 records.

Request

Method	URL
POST	api/pointOfService/ListDetails
HTTP Header	Key: X-Version Value: 3.0 *required

Parameter	Values	Description
companyBranchCode	string	Company Branch N/A as registered in Tax Authorities' platform.
pointOfService	string [optional]	The name of Point of Service.
filter	number [optional]	0: filter by open Points of Service (default) 1: filter by open (not connected) Order Forms
refNumber ^[1]	number	The unique serial number which will be used as the starting point of the returned results. Minimum value 1.
from ^[2]	date	Starting point in time for search results. <i>Alternative approach for time-based filtering.</i>
to ^[2]	date	Ending point in time for search results <i>Alternative approach for time-based filtering.</i>
page ^[2]	number	The page number of the required result subset to be returned. Minimum value 1. <i>Alternative approach for time-based filtering.</i>

[1] Paging input parameter. Parameter will be ignored if [2] (from/to/page) parameters are set.

[2] Paging input parameter. Applied when all [2] (from/to/page) parameters are set.

Response

Status	Response	Values	Description
200	success	string	Status of the verify request. true = Success, false = failure.
	data	array	List of Point of Service info.
	pointOfService	string	The name of the Point of Service.
	balance	decimal	The remaining balance of the Point of Service.
	refNumber	Number	The refNumber of this Point of Service record. Increment latest received refNumber by one (1) to fetch next paged list result.
	details	array	List of invoices to connected with Point of Service.
	externalSystemId	string	An identifier of the invoice specified by the client.
mark	long	Unique registration number of the invoice	

				provided by AADE.
			invoiceType	string Invoice Type according to Tax Authorities' documentation.
			totalAmount	decimal Invoice total amount (as absolute value).
			transactionAmount	decimal Transaction amount.
			invoiceCode	string Invoice code.
			orderFormStatus	number Order form connect status. 0: open (not connected) 1: connected
	errorCategory		string	Indicates the category of the error. TED = Technical error by EpsilonDigital BED = Business error by EpsilonDigital TTA = Technical error by Tax Authorities BTA = Business error by Tax Authorities
	errorCode		string	In case invoice upload fails, errorCode indicates the type of the error.
	errorMessage		string	Detailed description of the error.
401				Unauthorized request. The jwt is either invalid or expired.

4. Order Forms

Document type 8.6 Order Form is a non-value document intended for restaurant service businesses and its connection with Accounting Records is mandatory.

4.1 Connect Documents

For cases where the Order Form and Accounting Document are not connected in transmission, the ConnectDocuments functionality allows for delayed connection.

Request

Method	URL
POST	api/OrderForms/ConnectDocuments
HTTP Header	Key: X-Version Value: 3.0 *required

Parameter	Values	Description
<code>processId</code> ^[1] [optional]	Guid	Epsilon Digital's unique processId as returned by api/send.
<code>externalSystemId</code> ^[1] [optional]	string	The external identifier provided as input to api/send method for order form.
<code>documentMarks</code>	list	List (string) of Accounting Documents' marks.

[1] At least one of the above should be defined

Response

Status	Response	Values	Description
200	<code>connectedCount</code>	int	Count of connected Accounting Documents.
	<code>status</code>	number	The progress status of the procedure. Completed = 1, Failed = 2.
	<code>errorCategory</code>	string	Indicates the category of the error. TED = Technical error by EpsilonDigital BED = Business error by EpsilonDigital TTA = Technical error by Tax Authorities BTA = Business error by Tax Authorities
	<code>errorCode</code>	string	In case invoice upload fails, errorCode indicates the type of the error.
	<code>errorMessage</code>	string	Detailed description of the error.
401			Unauthorized request. The jwt is either invalid or expired.

5. Invoice Source Data analysis

The source argument in API call requests describes the content data of the invoice that will be transmitted to Tax Authorities'. It should contain all information required by both Tax Authorities' and e-Invoicing for PEPPOL BIS Billing 3.0 (sequence UBL 2.1).

The basic elements of the invoice are explained in detail in next the sections.

- Invoice issuer
- Invoice counterpart
- Invoice representative, when applicable
- Shipment Address, when applicable
- Basic Invoice Information

- Invoice Lines
- Payment Terms
- Correlated Invoices, when applicable
- Invoice Totals

Tax Authorities' and UBL2.1 also require specific elements to be configured according to given code lists ([Tax Authorities Code lists](#) & [PEPPOL BIS Billing 3.0](#)).

The code lists can be configured either at the external system (e.g EPR) or at Epsilon Digital Platform and resolved based on Invoice's details and are listed below.

- Country [ISO 3166-1 alpha-2](#)
- Currency [ISO 4217](#)
- Invoice Type
- VAT category
- VAT Exemption category
- Measurement Units
- Allowances / Charges Categories
- Move Purposes
- Payment Term Codes
- Classification Categories
- Classification Types
- VAT Classification Types

Source should also contain two additional elements in order to handle specific conditions of invoice's transmission, which are:

1. Invoice Transmission to end- customer
2. Invoice Delayed Transmission in case of connectivity issues.

More information about these conditions can be found on Section 3.3 and 3.4.

5.1 Tax Authorities' & UBL2.1 configured in External System

Provided that the integrated external system (e.g. ERP) has embedded configuration of Tax Authorities required information, this can be directly transmitted into the source invoice data structure without any further configuration on Epsilon Digital Platform.

A sample source invoice data structure for this intent is described below.

Group	Field	Level	Mandatory	Type	UBL ¹⁰	Description
invoice		root		object		Invoice to be transmitted to Tax Authorities' platform
issuer		1	YES	object		Issuer's information
	vatNumber	2	YES	string	BT-31	Issuer's TIN
	branch	2	NO	int		Issuer's Company Branch N/A as

						registered in Tax Authorities' platform
	country	2	YES	string	BT-40	Issuer's country ISO 3166-1 alpha-2
	city	2	NO	string	BT-37	Issuer's city
	street	2	NO	string	BT-35	Issuer's address street
	streetNumber	2	NO	string	BT-35	Issuer's address street number
	postalCode	2	NO	string	BT-38	Issuer's address postal code
contact		2	NO	object	BG-6	A group of business terms providing contact information about the Seller
	name	3	NO	string	BT-41	Seller contact point A contact point for a legal entity or person
	telephone	3	NO	string	BT-42	Seller contact telephone number A phone number for the contact point
	electronicMail	3	NO	string	BT-43	Seller contact email address An e-mail address for the contact point
counterpart		1	YES	object		Counterpart's information
	vatNumber	2	YES	string	BT-1 BT-48	Counterpart's TIN
	branch	2	NO	int	BT-1	Counterpart's Company Branch N/A as registered in Tax Authorities' platform
	name	2	YES	string	BT-44	Counterpart's Company Official Title
	country	2	YES	string	BT-55	Counterpart's country ISO 3166-1 alpha-2
	city	2	NO	string	BT-52	Counterpart's city
	street	2	NO	string	BT-50	Counterpart's address street
	streetNumber	2	NO	string	BT-50	Counterpart's address street number
	postalCode ^[2]	2	NO	string	BT-53	Counterpart's address postal code
	email	2	NO ^[1]	string	BT-49	Counterpart's Company contact email
	supplyAccountNo	2	NO	string		Electricity Supply Number. (Only for fuel invoices)
contact		2	NO	object	BG-9	A group of business terms providing contact information relevant for the Buyer
	name	3	NO	string	BT-56	Buyer contact point A contact point for a legal entity or person
	telephone	3	NO	string	BT-57	Buyer contact telephone number A phone number for the contact point
	electronicMail	3	NO	string	BT-58	Buyer contact email address An e-mail address for the contact point
representative		1	NO	object		Tax Representative's details if exists
	vatNumber	2	NO	string	BT-1	Representative's TIN

					BT-63	
	name	2	NO	string	BT-62	Representative's Title
deliveryAddress		1	NO	object		Shipping address details
	country	2	NO	string	BT-80	Shipping country ISO 3166-1 alpha-2
	city	2	NO	string	BT-77	Shipping address city
	street	2	NO	string	BT-75	Shipping address street
	streetNumber	2	NO	string	BT-75	Shipping address street number
	postalCode	2	NO	string	BT-78	Shipping address postal code
	partyName	2	NO	string	BT-70	The name of the party to which the goods and services are delivered. Required only for B2G Transmission.
	deliveryLocationIdentifier	2	NO	string	BT-71	Identifier for location at which the goods and services are delivered
	deliveryLocationSchema	2	NO	string	BT-71	Identification scheme of the deliverLocationIdentifier.
invoiceHeader		1	YES	object		Header of the invoice
	series	2	YES	string		Series Code of Invoice issued.
	aa	2	YES	long	BT-1	Invoice Number
	issueDate	2	YES	date	BT-1 BT-2	Invoice Date ISO 8601
	dueDate ^[1]	2	NO	date	BT-9	Payment Due Date ISO 8601 . In case the Amount due for payment is positive, either the Payment due date (BT-9) or Payment terms (BT-20) shall be present.
	paymentTerms ^[1]	2	NO	String	BT-20	A textual description of the payment terms that apply to the amount due for payment (Including description of possible penalties). In case the Amount due for payment is positive, either the Payment due date (BT-9) or the Payment terms (BT-20) shall be present.
	dispatchDate	2	NO	date		Dispatch Date ISO 8601
	invoiceNote	2	NO	string	BT-22	Invoice note/comment as free text
	invoiceCode	2	NO	string		Invoice Code
	invoiceType	2	YES	string	BT-1	Invoice Type according to Tax Authorities' documentation
	invoiceTypeUbl	2	YES	string	BT-3	Invoice Type according to UBL 2.1 documentation
	currency	2	YES	string	BT-5	Currency of Invoice ISO 4217
	tenderOrLotReference	2	NO	string	BT-17	Identification of the call for tender or lot the invoice relates to
	buyerAccountingReference	2	NO	string	BT-19	A textual value that specifies where to book the relevant data into the Buyer's financial accounts.
	selfPricing	2	NO	boolean		Indicates whether the invoice is self-pricing. Default is false
	movePurpose	2	NO	int		Move purpose according to Tax

						Authorities' documentation
otherMovePurposeTitle	2	NO	string			Other move purpose title. (Only for invoice type 9.3 or IsDeliveryNote = 1 and movePurpose = 19).
fuelInvoice	2	NO	Boolean			Indicates whether the invoice is related to fuel industry. Default is false
openPointOfService	2	NO	int			Opening Point of Service. 0 = None, 1 = Open. (Required only for order forms)
closePointOfService	2	NO	int			Closing Point of Service. 0 = None, 1 = Closing. (Required only for order forms)
pointOfService	2	NO	string			Point of service name. (Required only for order forms)
cancelConnected or IsCancelling	2	NO	Boolean			Cancel the correlation order forms in the section: correlatedInvoices. 0 = None, 1 = Cancel.
despatchDocumentReference	2	NO	string	BT-16 (BT-122 - BT-123)		Despatch advice reference. An identifier of a referenced despatch advice. Multiple despatch advice references may be defined in correlatedInvoices and the corresponding BT-122 and BT-123 fields will be populated.
actualDeliveryDate	2	NO	date	BT-72		The date on which the supply of goods or services was made or completed. Format = "YYYY-MM-DD"
isDeliveryNote	2	NO	Boolean			Indicates whether the invoice is consignment form. Default is false.
thirdPartyCollection	2	NO	Boolean			Indicates whether the invoice is recovery of third-parties (Acceptable only for invoice type 8.4 or 8.5). Default is false.
exchangeRate	2	NO	decimal			Enter the exchange rate between euro and currency. Only if the currency is not euro. Min value = 0, decimal digits = 5.
vehicleNumber	2	NO	string			Number of vehicle used to deliver the consignment. Applicable only for invoice type 9.3 or for invoices with isDeliveryNote = 1.
reverseDeliveryNote	2	NO	Boolean			Reverse delivery note indicator. Applicable only for invoice type 9.3.
reverseDeliveryNotePurpose	2	NO	string			Purpose of the reverse delivery note. Applicable only for invoice type 9.3 when reverseDeliveryNote is set to true. Min value=1, Max value=5
otherDeliveryNoteHeader	2	NO	object			Address of the consignment form
loadingAddress	3	NO	object			Loading address of consignment form.
street	4	NO	string			Loading street.

	number	4	NO	string		Loading street number.
	postalCode	4	NO	string		Loading postal code (For invoice type 9.3 or isDeliveryNote = 1 is mandatory).
	city	4	NO	string		Loading city (For invoice type 9.3 or isDeliveryNote = 1 is mandatory).
deliveryAddress		3	NO	object		Delivery address of consignment form.
	street	4	NO	string		Delivery street.
	number	4	NO	string		Delivery street number.
	postalCode	4	NO	string		Delivery postal code (For invoice type 9.3 or isDeliveryNote = 1 is mandatory).
	city	4	NO	string		Delivery city (For invoice type 9.3 or isDeliveryNote = 1 is mandatory).
startShippingBranch		3	NO	int		Dispatch initiation branch
completeShippingBranch		3	NO	int		Shipping completion branch.
otherCorrelatedEntities		2	NO	list		Other Correlated Entities.
type		3	YES	int		Entity category.
entityData		3	YES	object		Entity details.
	vatNumber	4	YES	string		Entity's VAT number.
	branch	4	YES	int		Entity's branch number (min value = 0).
	name	4	NO	string		Entity's name.
	documentIdNo	4	NO	string		Number of official document. Only for tax free invoices, specialInvoiceCategory = 4 (max length = 100).
	countryDocumentId	4	NO	string		Country code where the official document was issued.
	supplyAccountNo	4	NO	string		Electricity Supply Number.
	address	4	NO	object		Entity's address.
	street	5	NO	string		Entity's street.
	number	5	NO	string		Entity's number.
	postalCode	5	YES	string		Entity's postal code.
	city	5	YES	string		Entity's city.
	country	5	YES	string		Entity's country code.
invoiceDetails		1	YES	object		Lines of the invoice
	lineNumber	2	NO	int		Invoice Line N/A
	recType	2	NO	int		Line type according to Tax Authorities' documentation
	quantity	2	YES	decimal	BT-129	Line quantity
	quantity15 ^[2]	2	NO	Decimal		Used only for Fuel Invoices and represents fuel quantity in 15°C
	entityName	2	YES	string	BT-153	Item's Description
	invoiceDetailType	2	NO	int		Invoice Detail Type when necessary according to Tax Authorities' documentation (e.g invoice type 1.5)
	fuelCode ^[2]	2	NO	int		Fuel Code according to Tax Authorities' documentation.

	netValue	2	YES	decimal	BT-131	Line net amount
	totalValue	2	NO	decimal		Line total amount
	vatCategory	2	YES	int		Vat Category according to Tax Authorities' documentation
	vatCategoryUbl	2	YES	string	BT-118	Vat Category according to UBL 2.1 documentation
	vatExemption ^[2]	2	NO	int		Vat exemption category according to Tax Authorities' documentation
	vatExemptionUbl ^[2]	2	NO	string	BT-121	Vat Exemption category according to UBL 2.1 documentation
	vatAmount	2	YES	decimal	BT-110	VAT amount
	vatPercent	2	YES	decimal	BT-119	VAT percent
	measurementUnit	2	YES	Int		Measurement Unit according to Tax Authorities' documentation
	measurementUnitUbl	2	YES	string	BT-130	Measurement Unit according to UBL 2.1 documentation
	lineComments	2	NO	string	BT-127	Comments of line
	classificationCategory	2	NO	string		Classification category according to Tax Authorities' documentation (Epsilon Digital automatically resolves whether it represents income or expense classification)
	classificationType	2	NO	string		Classification type according to Tax Authorities' documentation (Epsilon Digital automatically resolves whether it represents income or expense classification)
	classificationVatType	2	NO	string		VAT classification type of in case of expense classification according to Tax Authorities' documentation
	discountOption	2	NO	Boolean		Right to discount. 0 = False, 1 = True.
	discountAmount	2	NO	decimal		Enter the discount amount.
	cpvCode	2	NO	string		Classification code for public procurement. Required only for B2G Transmission. (publishType = 2)
	TaricNo	2	NO	string		Taric code, integrated Tariff of the European Communities. (Only for invoice type 9.3 or IsDeliveryNote = 1)
	itemCode	2	NO	string		Item code. (Only for invoice type 9.3 or IsDeliveryNote = 1 or B2G transmission)
	ublAllowanceInTotals	2	NO	Boolean		Applicable only for B2G. Flag indicating whether the allowance specified in line should be included in invoice totals or if it should be included in the B2G invoice only as informative text (BG-24). Default value "false".
taxinfo		2	NO	object		Charge/allowance applied on line level or charge with VAT in correspondence with "recType".

	taxCategory	3	NO	int		Charge/allowance category according to Tax Authorities' documentation
	taxCategoryUbl	3	NO	string		Charge/allowance category according to UBL 2.1 documentation
	underlyingValue	3	NO	decimal		Total amount subject to a specific charge/allowance category
	taxPercent	3	NO	decimal		Charge/allowance percent applied
itemProperties		2	NO	list	BG-2	A group of business terms providing information about properties of the goods and services invoiced.
	name	3	YES	string	BT-160	Item attribute name
	value	3	YES	string	BT-161	Item attribute value
paymentMethods		1	YES	List		List of payment Methods applied with different type and portion of net value
	type	2	YES	Int		Payment method code according to Tax Authorities' documentation
	amount	2	YES	decimal		Portion of net amount
	externalPaymentId	2	NO	string		Only for request without using externalSystemId. The external payment identifier specified in the api/requestPayment method.
	endToEndReferenceId	2	NO	string		The unique payment request identifier (for IRIS payments).
	signature ^[2]	2	NO	string		Epsilon Digital Provider payment signature returned by RequestPayment method. Required only for payment method type EFT-POS (type=7)
	transactionId ^[2]	2	NO	string		Bank transaction identifier returned by the POS terminal. Required only for payment method type EFT-POS (type=7)
	tipAmount ^[2]	2	NO	decimal		Tip amount paid alongside the payable amount. Required only for payment method type EFT-POS (type=7) when a tip amount is returned by the POS terminal.
	terminalId	2	NO	string		The Id of the EFT-POS terminal that will perform the payment transaction. Required only when requesting payment via Send with TransmissionType 4.
	nspCode	2	NO	string		Code identifier of the EFT-POS service provider. Values described in Appendix 5 . Required only when requesting payment via Send with TransmissionType 4.
taxesTotals ^[2]		1	NO	List		Fees and additional charges or allowances details, when additional charges are included

	taxType	2	NO	int		Type of the charge/allowance according to Tax Authorities' documentation
	taxCategory	2	NO	int		Charge/allowance category according to Tax Authorities' documentation
	taxCategoryUbl	2	NO	string	BT-98 BT-105	Charge/allowance category according to UBL 2.1 documentation
	underlyingValue	2	NO	decimal	BT-93 BT-100	Total amount subject to a specific charge/allowance category
	taxAmount	2	NO	decimal	BT-92 BT-99	Charge/allowance amount
	taxPercent	2		decimal	BT-94 BT-101	Charge/allowance percent applied
	ublAllowanceInTotals	2	NO	Boolean		Applicable only for B2G. Flag indicating whether the allowance specified in taxesTotals should be included in invoice totals or if it should be included in the B2G invoice only as informative text (BG-24). Default value "false".
correlatedInvoices ^[2]		1	NO	List		Specific Invoice Types needs correlation between the invoice issued and a previously issued related invoice, e.g. sales invoice-credit invoice
	extSystemId	2	NO	string		Original Invoice id as defined in your ERP System
	mark	2	NO	long		Original Invoice transmission M.AR.K
	invoiceType	2	NO	string		Invoice type of the correlated invoice.
invoiceSummary		1	YES	object		Summary of total amounts of the invoice
	totalNetValue	2	NO	decimal	BT-106	Total net amount of the invoice
	totalVatAmount	2	NO	decimal	BT-110	Total VAT amount of the invoice
	totalValue	2	YES	decimal	BT-112	Invoice's Payable Amount
publishType		1	NO	int		Type of Electronic Invoice Transmission (None = 0, B2B = 1, B2G = 2)
publishDetails		1	NO	object		Additional Information for B2B and B2G publishing
	contractingAuthorityID	2	NO	string	BT-46	Public Authority Identifier (Required only for B2G)
	contractIdentifier	2	NO	string	BT-12	The Identifier of the contract with the public Institution (Required only for B2G)
	organizationalUnitName	2	NO	string	BT-10	Name of internal organizational unit of public authority that will actually receive the invoice, if any.
	organizationalUnitCode	2	NO	string	BT-10	Code of internal organizational unit of public authority that will actually receive the invoice, if any.
budget		2	NO	object		
	type	3	NO	int	BT-11	Type of the budget (Regular Budget = 1, e-PDE = 2, Other Budget = 3) (Required only for B2G)

	identifier	3	NO	string		Identifier number of the budget (Required only for B2G)
	purchaseOrderReference	2	NO	string	BT-13	An identifier of a referenced purchase order, issued by the Buyer. An invoice must have buyer reference (BT-10) or purchase order reference. In cases where sales order reference is provided, but there's no purchase order reference, then use value "NA" as this element is mandatory in UBL.
packingsDeclarations		1	NO	list		Declarations of Packaging for Distribution.
	packagingType	2	YES	int		Type of Packaging.
	quantity	2	YES	int		Quantity of packaging.
	otherPackagingTypeTitle	2	NO	string		Title for Other Types of Packaging (max length = 150).
Messages		1	NO	list		Recipients information & type of message template
	type	2	YES	int		Type of message to be sent (Email = 0, SMS = 1, Viber = 2)
	recipients	2	YES	string		Email or mobile number of the recipients separated by ";"
	cc	2	NO	string		Cc emails separated by ";"
	templateIdentifier	2	NO	string		Identifier of message template, when not included the default message template is applied.
delayedProcessCode ^[2]		1	NO	string		In case of real time transmission failure, authenticated code must be included.
payee		1	NO	object	BG-10	A group of business terms providing information about the Payee, i.e. the role that receives the payment. Shall be used when the Payee is different from the Seller.
	name	2	NO	string	BT-59	The name of the Payee
	id	2	NO	string	BT-60	Payee identifier or bank assigned creditor identifier This element is used for both the identification of the Payee, or the unique banking reference identifier of Payee (assigned by the Payee bank.) For payee identification use ICD code list, for SEPA bank assigned creditor reference, use SEPA
	companyId	2	NO	string	BT-61	Payee legal registration identifier An identifier issued by an official registrar that identifies the Payee as a legal entity or person
invoicePeriod		1	NO	object	BG-14	A group of business terms providing information on the invoice period. Also called delivery period. If the group is used, the invoicing period start date and/or end date must be used.
	startDate	2	YES	date	BT-73	Invoicing period start date
	endDate	2	YES	Date	BT-74	Invoicing period end date

^[1] According to [PEPPOL BIS Billing 3.0](#)

^[2] Mandatory under specific conditions according to Tax Authorities' documentation



json example

```
{
  "invoice": {
    "issuer": {
      "vatNumber": "000000000",
      "branch": 0,
      "street": "street",
      "streetNumber": "streetNumber",
      "postalCode": "postalCode",
      "city": "city",
      "country": "GR",
      "contact": {
        "name": "string",
        "telephone": "string",
        "electronicMail": "string"
      }
    },
    "counterpart": {
      "vatNumber": "000000000",
      "branch": 0,
      "name": "name",
      "street": "street",
      "streetNumber": "streetNumber",
      "postalCode": "postalCode",
      "city": "city",
      "country": "GR",
      "email": "test@email.com",
      "contact": {
        "name": "string",
        "telephone": "string",
        "electronicMail": "string"
      }
    },
    "representative": {
      "vatNumber": "000000000",
      "name": "name"
    },
    "deliveryAddress": {
      "street": "street",
      "streetNumber": "streetNumber",
      "postalCode": "postalCode",
      "city": "city",
      "country": "GR"
    },
    "publishType": 2,
    "publishDetails": {
      "contractingAuthorityID": "1000.E00904.0001",
      "budget": {
        "type": 1,
        "identifier": "2018EP06600057"
      },
      "contractIdentifier": "20SYMV006467658",
      "organizationalUnitName": "Sample Org Unit",
      "organizationalUnitCode": "123456",
      "purchaseOrderReference": "string"
    },
    "invoiceHeader": {
      "series": "INV",
      "aa": 1,
      "issueDate": "yyyy-MM-dd",
      "dispatchDate": "yyyy-MM-dd",
      "invoiceNote": "Free text comment",
      "invoiceCode": "INV-00001",
      "invoiceType": "1.1",
      "invoiceTypeUbl": "380",
      "currency": "EUR",
      "selfPricing": false,
      "movePurpose": 1,
      "fuelInvoice": false,
      "despatchDocumentReference": "string",
      "actualDeliveryDate": "yyyy-MM-dd"
    },
    "invoiceDetails": [
      {
```



```
"lineNumber": 1,
"recType": 1,
"quantity": 1,
"entityName": "string",
"invoiceDetailType": 0,
"netValue": 50,
"totalValue": 62,
"vatCategory": 1,
"vatCategoryUbl": "Z",
"vatExemption": 16,
"vatExemptionUbl": "VATEX-EU-79",
"vatAmount": 12,
"vatPercent": 24,
"measurementUnit": 1,
"measurementUnitUbl": "E48",
"lineComments": "string",
"classificationCategory": "string",
"classificationType": "string",
"classificationVatType": "string",
"cpvCode": "45233222-1",
"itemProperties": [
  {
    "name": "string",
    "value": "string"
  },
  {
    "name": "colon",
    "value": "red"
  }
],
"taxInfo": {
  "taxCategory": 1,
  "taxCategoryUbl": "50",
  "underlyingValue": 1,
  "taxPercent": 20
},
],
"taxesTotals": [
  {
    "taxType": 1,
    "taxCategory": 1,
    "taxCategoryUbl": "50",
    "underlyingValue": 1,
    "taxAmount": 10,
    "taxPercent": 20
  }
],
"paymentMethods": [
  {
    "type": 5,
    "amount": 0
  }
],
"correlatedInvoices": [
  {
    "extSystemId": "string",
    "mark": 0,
  }
],
"invoiceSummary": {
  "totalNetValue": 50,
  "totalVatAmount": 12,
  "totalValue": 62
},
"payee": {
  "id": "string",
  "name": "string",
  "companyId": "string",
},
"invoicePeriod": {
  "startDate": "yyyy-MM-dd",
  "endDate": "yyyy-MM-dd",
},
"Messages": [
  {
    "type": 0,
```



```
"recipients": "test1@email.com;test2@email.com",  
"cc": "test3@email.com;test4@email.com",  
"templateIdentifier": "0000001"  
},  
{  
  "type": 1,  
  "recipients": "6983022568;6983022868"  
}  
]  
}
```

5.2 Tax Authorities' & UBL2.1 configured in Epsilon Digital

In case the integrated external system (e.g. ERP) is agnostic of Tax Authorities code lists, source invoice data structure should contain the necessary native values so that the mapping configuration, to the corresponding Tax Authorities structures, can be performed on Epsilon Digital Platform.

A sample source invoice data structure for this intent is described below.

Group	Field	Level	Mandatory	Type	UBL ¹⁾	Description
invoice		root		object		Invoice to be transmitted to Tax Authorities' platform
issuer		1	YES	object		Issuer's information
	vatNumber	2	YES	string	BT-31	Issuer's TIN
	branch	2	NO	int		Issuer's Company Branch N/A as registered in Tax Authorities' platform
	country	2	YES	string	BT-40	Issuer's country ISO 3166-1 alpha-2
	city	2	NO	string	BT-37	Issuer's city
	street	2	NO	string	BT-35	Issuer's address street
	streetNumber	2	NO	string	BT-35	Issuer's address street number
	postalCode	2	NO	string	BT-38	Issuer's address postal code
contact		2	NO	object	BG-6	A group of business terms providing contact information about the Seller
	name	3	NO	string	BT-41	Seller contact point A contact point for a legal entity or person
	telephone	3	NO	string	BT-42	Seller contact telephone number A phone number for the contact point
	electronicMail	3	NO	string	BT-43	Seller contact email address An e-mail address for the contact point
counterpart		1	YES	object		Counterpart's information
	vatNumber	2	YES	string	BT-1 BT-48	Counterpart's TIN
	branch	2	NO	int	BT-1	Counterpart's Company Branch N/A as registered in Tax Authorities' platform
	name	2	YES	string	BT-44	Counterpart's Company Official Title
	country	2	YES	string	BT-55	Counterpart's country ISO 3166-1 alpha-2
	city	2	NO	string	BT-52	Counterpart's city
	street	2	NO	string	BT-50	Counterpart's address street
	streetNumber	2	NO	string	BT-50	Counterpart's address street number
	postalCode ²⁾	2	NO	string	BT-53	Counterpart's address postal code
	email	2	NO ¹⁾	string	BT-49	Counterpart's Company contact email
	supplyAccountNo	2	NO	string		Electricity Supply Number. (Only for fuel invoices)
contact		2	NO	object	BG-9	A group of business terms providing contact information relevant for the Buyer

	name	3	NO	string	BT-56	Buyer contact point A contact point for a legal entity or person
	telephone	3	NO	string	BT-57	Buyer contact telephone number A phone number for the contact point
	electronicMail	3	NO	string	BT-58	Buyer contact email address An e-mail address for the contact point
representative		1	NO	object		Tax Representative's details if exists
	vatNumber	2	NO	string	BT-1 BT-63	Representative's TIN
	name	2	NO	string	BT-62	Representative's Title
deliveryAddress		1	NO	object		Shipping address details
	country	2	NO	string	BT-80	Shipping country ISO 3166-1 alpha-2
	city	2	NO	string	BT-77	Shipping address city
	street	2	NO	string	BT-75	Shipping address street
	streetNumber	2	NO	string	BT-75	Shipping address street number
	postalCode	2	NO	string	BT-78	Shipping address postal code
	partyName	2	NO	string	BT-70	The name of the party to which the goods and services are delivered. Required only for B2G Transmission.
	deliveryLocationIdentifier	2	NO	string	BT-71	Identifier for location at which the goods and services are delivered
	deliveryLocationSchema	2	NO	string	BT-71	Identification scheme of the deliverLocationIdentifier.
invoiceHeader		1	YES	object		Header of the invoice
	series	2	YES	string	BT-1 BT-3	Series Code of Invoice issued, use to resolve invoice type.
	aa	2	YES	long	BT-1	Invoice Number
	issueDate	2	YES	date	BT-1 BT-2	Invoice Date ISO 8601
	dueDate ^[1]	2	NO	date	BT-9	Payment Due Date ISO 8601 . In case the Amount due for payment is positive, either the Payment due date (BT-9) or the Payment terms (BT-20) shall be present.
	paymentTerms ^[1]	2	NO	String	BT-20	A textual description of the payment terms that apply to the amount due for payment (Including description of possible penalties). In case the Amount due for payment is positive, either the Payment due date (BT-9) or the Payment terms (BT-20) shall be present.
	dispatchDate	2	NO	date		Dispatch Date ISO 8601
	invoiceNote	2	NO	string	BT-22	Invoice note/comment as free text
	invoiceCode	2	NO	string		Invoice Code
	currency	2	YES	string	BT-3	Currency of Invoice ISO 4217
	tenderOrLotReference	2	NO	string	BT-17	Identification of the call for tender or lot the invoice relates to
	buyerAccountingReference	2	NO	string	BT-19	A textual value that specifies where to book the relevant data into the Buyer's financial accounts.
	selfPricing	2	NO	boolean		Indicates whether the invoice is self-pricing. Default is false

	movePurpose	2	NO	string		Move purpose as configured in ERP
	otherMovePurposeTitle	2	NO	string		Other move purpose title. (Only for invoice type 9.3 or isDeliveryNote = 1 and movePurpose = 19).
	fuelInvoice	2	NO	Boolean		Indicates whether the invoice is related to fuel... Default is false
	openPointOfService	2	NO	int		Opening Point of Service. 0 = None, 1 = Open. (Required only for order forms)
	closePointOfService	2	NO	int		Closing Point of Service. 0 = None, 1 = Closing. (Required only for order forms)
	pointOfService	2	NO	string		Point of service name. (Required only for order forms)
	cancelConnected or isCancelling	2	NO	Boolean		Cancel the correlation order forms in the section: correlatedInvoices. 0 = None, 1 = Cancel.
	despatchDocumentReference	2	NO	string	BT-16 (BT-122 - BT-123)	Despatch advice reference. An identifier of a referenced despatch advice. Multiple despatch advice references may be defined in correlatedInvoices and the corresponding BT-122 and BT-123 fields will be populated.
	actualDeliveryDate	2	NO	date	BT-72	The date on which the supply of goods or services was made or completed. Format = "YYYY-MM-DD"
	isDeliveryNote	2	NO	Boolean		Indicates whether the invoice is consignment form. Default is false.
	thirdPartyCollection	2	NO	Boolean		Indicates whether the invoice is recovery of third-parties (Acceptable only for invoice type 8.4 or 8.5). Default is false.
	exchangeRate	2	NO	decimal		Enter the exchange rate between euro and currency. Only if the currency is not euro. Min value = 0, decimal digits = 5.
	vehicleNumber	2	NO	string		Number of vehicle used to deliver the consignment. Applicable only for invoice type 9.3 or for invoices with isDeliveryNote = 1.
	reverseDeliveryNote	2	NO	Boolean		Reverse delivery note indicator. Applicable only for invoice type 9.3.
	reverseDeliveryNotePurpose	2	NO	string		Purpose of the reverse delivery note. Applicable only for invoice type 9.3 when reverseDeliveryNote is set to true. Min value=1, Max value=5
	otherDeliveryNoteHeader	2	NO	object		Address of the consignment form
	loadingAddress	3	NO	object		Loading address of consignment form.
	street	4	NO	string		Loading street.
	number	4	NO	string		Loading street number.
	postalCode	4	NO	string		Loading postal code (For invoice type 9.3 or isDeliveryNote = 1 is mandatory).
	city	4	NO	string		Loading city (For invoice type 9.3 or isDeliveryNote = 1 is mandatory).
	deliveryAddress	3	NO	object		Delivery address of consignment form.

	street	4	NO	string		Delivery street.
	number	4	NO	string		Delivery street number.
	postalCode	4	NO	string		Delivery postal code (For invoice type 9.3 or isDeliveryNote = 1 is mandatory).
	city	4	NO	string		Delivery city (For invoice type 9.3 or isDeliveryNote = 1 is mandatory).
startShippingBranch		3	NO	int		Dispatch initiation branch
completeShippingBranch		3	NO	int		Shipping completion branch.
otherCorrelatedEntities		2	NO	list		Other Correlated Entities.
type		3	YES	int		Entity category.
entityData		3	YES	object		Entity details.
	vatNumber	4	YES	string		Entity's VAT number.
	branch	4	YES	int		Entity's branch number (min value = 0).
	name	4	NO	string		Entity's name.
	documentIdNo	4	NO	string		Number of official document. Only for tax free invoices, specialInvoiceCategory = 4 (max length = 100).
	countryDocumentId	4	NO	string		Country code where the official document was issued.
	supplyAccountNo	4	NO	string		Electricity Supply Number.
	address	4	NO	object		Entity's address.
	street	5	NO	string		Entity's street.
	number	5	NO	string		Entity's number.
	postalCode	5	YES	string		Entity's postal code.
	city	5	YES	string		Entity's city.
	country	5	YES	string		Entity's country code.
invoiceDetails		1	YES	object		Lines of the invoice
	lineNumber	2	NO	int		Invoice Line N/A
	lineType	2	NO	string		Line descriptor property in order to apply specific behavior to the line
	quantity	2	YES	decimal	BT-129	Line quantity
	quantity15 ^[2]	2	NO	decimal		Used only for Fuel Invoices and represents fuel quantity in 15°C
	entityName	2	YES	string	BT-153	Item's Description
	netValue	2	YES	decimal	BT-131	Line net amount
	totalValue	2	NO	decimal		Line total amount
	vatCategory	2	YES	string	BT-118	Vat Category code as configured in ERP System
	vatExemption ^[2]	2	NO	string	BT-121	Vat Exemption as configured in ERP System
	vatAmount	2	YES	decimal	BT-110	VAT amount
	vatPercent	2	YES	decimal	BT-119	VAT percent
	measurementUnit	2	YES	string	BT-130	Measurement Unit as configured in ERP System
	lineComments	2	NO	string	BT-127	Comments of line
	fuelCode ^[2]	2	NO	int		Fuel Code according to Tax Authorities' documentation.
	discountOption	2	NO	Boolean		Right to discount. 0 = False, 1 = True.

	discountAmount	2	NO	decimal		Enter the discount amount.
	cpvCode	2	NO	string		Classification code for public procurement. Required only for B2G Transmission. (publishType = 2)
	TaricNo	2	NO	string		Taric code, integrated Tariff of the European Communities. (Only for invoice type 9.3 or IsDeliveryNote = 1)
	itemCode	2	NO	string	BT-155	Item code. (Only for invoice type 9.3 or IsDeliveryNote = 1 or B2G transmission)
	ublAllowanceInTotals	2	NO	Boolean		Applicable only for B2G. Flag indicating whether the allowance specified in line should be included in invoice totals or if it should be included in the B2G invoice only as informative text (BG-24). Default value "false".
taxInfo		2	NO	object		Charge/allowance applied on line level or charge with VAT in correspondence to line's behavior.
	taxCategory	3	NO	string		Charge/allowance category as configured in ERP System
	underlyingValue	3	NO	decimal		Total amount subject to a specific charge/allowance category
	taxPercent	3	NO	decimal		Charge/allowance percent applied
itemProperties		2	NO	list	BG-2	A group of business terms providing information about properties of the goods and services invoiced.
	name	3	YES	string	BT-160	Item attribute name
	value	3	YES	string	BT-161	Item attribute value
paymentMethods		1	YES	List		List of payment Methods applied with different type and portion of net value
	type	2	YES	int		Payment Method Code as configured in ERP
	amount	2	YES	decimal		Portion of net amount
	externalPaymentId	2	NO	string		Only for request without using externalSystemId. The external payment identifier specified in the api/requestPayment method.
	endToEndReferenceId	2	NO	string		The unique payment request identifier (for IRIS payments).
	signature ^[2]	2	NO	string		Epsilon Digital Provider payment signature returned by RequestPayment method. Required only for payment method type EFT-POS (type=7)
	transactionId ^[2]	2	NO	string		Bank transaction identifier returned by the POS terminal. Required only for payment method type EFT-POS (type=7)
	tipAmount ^[2]	2	NO	decimal		Tip amount paid alongside the payable amount. Required only for payment method type EFT-POS (type=7) when a tip amount is returned by the POS terminal.
	terminalId	2	NO	string		The Id of the EFT-POS terminal that will

						perform the payment transaction. Required only when requesting payment via Send with TransmissionType 4.
	nspCode	2	NO	string		Code identifier of the EFT-POS service provider. Values described in Appendix 5 . Required only when requesting payment via Send with TransmissionType 4.
taxesTotals ^[2]		1	NO	List		Fees and additional charges or allowances details, when additional charges are included
	taxType	2	NO	string		Type of the charge/allowance as configured in ERP System
	taxCategory	2	NO	string		Charge/allowance category as configured in ERP System
	underlyingValue	2	NO	decimal		Total amount subject to a specific charge/allowance category
	taxAmount	2	NO	decimal		Charge/allowance amount
	taxPercent	2	NO	decimal		Charge/allowance percent applied
	ublAllowanceInTotals	2	NO	Boolean		Applicable only for B2G. Flag indicating whether the allowance specified in taxesTotals should be included in invoice totals or if it should be included in the B2G invoice only as informative text (BG-24). Default value "false".
correlatedInvoices ^[2]		1	NO	List		Specific Invoice Types needs correlation between the invoice issued and a previously issued related invoice, e.g. sales invoice-credit invoice
	extSystemId	2	NO	string		Original Invoice id as defined in your ERP System
	mark	2	NO	long		Original Invoice transmission M.AR.K
	invoiceType	2	NO	string		Invoice type of the correlated invoice.
invoiceSummary		1	YES	object		Summary of total amounts of the invoice
	totalNetValue	2	NO	decimal	BT-106	Total net amount of the invoice
	totalVatAmount	2	NO	decimal	BT-110	Total VAT amount of the invoice
	totalValue	2	YES	decimal	BT-112	Invoice's Payable Amount
publishType		1	NO	int		Type of Electronic Invoice Transmission (None = 0, B2B = 1, B2G = 2)
publishDetails		1	NO	object		Additional Information for B2B and B2G publishing
	contractingAuthorityID	2	NO	string	BT-46	Public Authority Identifier (Required only for B2G)
	contractIdentifier	2	NO	string	BT-12	The Identifier of the contract with the public Institution (Required only for B2G)
	organizationalUnitName	2	NO	string	BT-10	Name of internal organizational unit of public authority that will actually receive the invoice, if any.
	organizationalUnitCode	2	NO	string	BT-10	Code of internal organizational unit of public authority that will actually receive the invoice, if any.
	purchaseOrderReference	2	NO	string	BT-13	An identifier of a referenced purchase order, issued by the Buyer. An invoice must have buyer reference (BT-10) or purchase order reference. In cases

						where sales order reference is provided, but there's no purchase order reference, then use value "NA" as this element is mandatory in UBL.
packingsDeclarations		1	NO	list		Declarations of Packaging for Distribution.
	packagingType	2	YES	int		Type of Packaging.
	quantity	2	YES	int		Quantity of packaging.
	otherPackagingTypeTitle	2	NO	string		Title for Other Types of Packaging (max length = 150).
budget		2	NO	object		
	type	3	NO	int	BT-11	Type of the budget (Regular Budget = 1, e-PDE = 2, Other Budget = 3) (Required only for B2G)
	identifier	3	NO	string		Identifier number of the budget (Required only for B2G)
Messages		1	NO	object		Recipients information & type of message template
	type	2	YES	int		Type of message to be sent (Email = 0, SMS = 1, Viber = 2)
	recipients	2	YES	string		Email or mobile number of the recipients separated by ";"
	cc	2	NO	string		Cc emails separated by ";"
	templateIdentifier	2	NO	string		Identifier of message template, when not included the default message template is applied.
delayedProcessCode ^[2]		1	NO	string		In case of real time transmission failure, authenticated code must be included.
payee		1	NO	object	BG-10	A group of business terms providing information about the Payee, i.e. the role that receives the payment. Shall be used when the Payee is different from the Seller.
	name	2	NO	string	BT-59	The name of the payee
	id	2	NO	string	BT-60	Payee identifier or bank assigned creditor identifier This element is used for both the identification of the Payee, or the unique banking reference identifier of Payee (assigned by the Payee bank.) For payee identification use ICD code list, for SEPA bank assigned creditor reference, use SEPA
	companyId	2	NO	string	BT-61	Payee legal registration identifier An identifier issued by an official registrar that identifies the Payee as a legal entity or person
invoicePeriod		1	NO	object	BG-14	A group of business terms providing information on the invoice period. Also called delivery period. If the group is used, the invoicing period start date and/or end date must be used.
	startDate	2	YES	date	BT-73	Invoicing period start date
	endDate	2	YES	Date	BT-74	Invoicing period end date

^[1] According to [PEPPOL BIS Billing 3.0](#)

^[2] Mandatory under specific conditions according to Tax Authorities' documentation

json example

```
{
  "invoice": {
    "issuer": {
      "vatNumber": "000000000",
      "branch": 0,
      "street": "street",
      "streetNumber": "streetNumber",
      "postalCode": "postalCode",
      "city": "city",
      "country": "GR",
      "contact": {
        "name": "string",
        "telephone": "string",
        "electronicMail": "string"
      }
    },
    "counterpart": {
      "vatNumber": "000000000",
      "branch": 0,
      "name": "name",
      "street": "street",
      "streetNumber": "streetNumber",
      "postalCode": "postalCode",
      "city": "city",
      "country": "GR",
      "email": "test@email.com",
      "contact": {
        "name": "string",
        "telephone": "string",
        "electronicMail": "string"
      }
    },
    "representative": {
      "vatNumber": "000000000",
      "name": "name"
    },
    "deliveryAddress": {
      "street": "street",
      "streetNumber": "streetNumber",
      "postalCode": "postalCode",
      "city": "city",
      "country": "GR"
    },
    "publishType": 2,
    "publishDetails": {
      "contractingAuthorityID": "1000.E00904.0001",
      "budget": {
        "type": 1,
        "identifier": "2018EP06600057"
      },
      "contractIdentifier": "20SYMV006467658",
      "organizationalUnitName": "Sample Org Unit",
      "organizationalUnitCode": "123456",
      "purchaseOrderReference": "string"
    },
    "invoiceHeader": {
      "series": "INV",
      "aa": 1,
      "issueDate": "yyyy-MM-dd",
      "dispatchDate": "yyyy-MM-dd",
      "invoiceNote": "Free text comment",
      "invoiceCode": "INV-00001",
      "currency": "EUR",
      "selfPricing": false,
      "movePurpose": "movePurpose1",
      "fuelInvoice": false,
      "despatchDocumentReference": "string",
      "actualDeliveryDate": "yyyy-MM-dd"
    },
    "invoiceDetails": [
      {
        "lineNumber": 1,
        "lineType": "1",
        "quantity": 1,
        "entityName": "string",

```



```
"netValue": 50,
"totalValue": 62,
"vatCategory": "VT01",
"vatExemption": "EX01",
"vatAmount": 12,
"vatPercent": 24,
"measurementUnit": "PCS",
"lineComments": "string",
"cpvCode": "45233222-1",
"itemProperties": [
  {
    "name": "string",
    "value": "string"
  },
  {
    "name": "color",
    "value": "red"
  }
],
"taxInfo": {
  "taxCategory": "category_1",
  "underlyingValue": 1,
  "taxPercent": 20
},
],
"taxesTotals": [
  {
    "taxType": "1",
    "taxCategory": "category_1",
    "underlyingValue": 1,
    "taxAmount": 10,
    "taxPercent": 20
  }
],
"paymentMethods": [
  {
    "type": 5,
    "amount": 0
  }
],
"correlatedInvoices": [
  {
    "extSystemId": "string",
    "mark": 0,
  }
],
"invoiceSummary": {
  "totalNetValue": 50,
  "totalVatAmount": 12,
  "totalValue": 52
},
"payee": {
  "id": "string",
  "name": "string",
  "companyId": "string",
},
"invoicePeriod": {
  "startDate": "yyyy-MM-dd",
  "endDate": "yyyy-MM-dd",
},
"Messages": [
  {
    "type": 0,
    "recipients": "test1@email.com;test2@email.com",
    "cc": "test3@email.com;test4@email.com",
    "templateIdentifier": "0000001"
  },
  {
    "type": 1,
    "recipients": "6983022568;6983022868"
  }
]
}
```

5.3 Invoice Transmission to end customer

Epsilon digital provides a service of sending personalized invoice information and the signed invoice file to a list of end customer's contacts via email, SMS and Viber.

The messages are defined as follows.

1. Epsilon Digital UI configuration. In this case the recipients can be configured through "Contacts" page and automatically recognized by their Tax Identification Number. More than one message templates can be assigned to each contact (recipient).
2. Identify invoice recipients on transmission via API call. The "Messages" entity should be included in the "source" argument as described above.

Example of using "Messages".

```
"Messages": [  
  {  
    "type": 0  
    "recipients": "test1@email.com;test2@email.com",  
    "cc": "test3@email.com;test4@email.com",  
    "templatelidentifier": "000001"  
  },  
  {  
    "type": 1,  
    "recipients": "6983022568;6983022868"  
  }  
]
```

Please note that the recipients specified via API override any Epsilon Digital configuration. Both cases requires messages templates to be set through Epsilon Digital UI configuration for each of the sending modes.

Appendix 1

Epsilon Digital **Development** Environment Endpoints

Description	URL
Base URL	https://beta-myaccount.epsilonnet.gr/
myAccount API Calls	https://beta-myaccount.epsilonnet.gr/swagger
Epsilon Digital API Calls	url1/swagger url1 is returned by https://beta-myaccount.epsilonnet.gr/api/Account/LoginToSubscription

Epsilon Digital **Production** Environment Endpoints

Description	URL
Base URL	https://myaccount.epsilonnet.gr/
myAccount API Calls	https://myaccount.epsilonnet.gr/swagger
Epsilon Digital API Calls	url1/swagger url1 is returned by https://myaccount.epsilonnet.gr/api/Account/LoginToSubscription

Appendix 2

Conventions

1. **Client** - Client application.
2. **Status** - HTTP status code of response.
3. All the possible responses are listed under 'Responses' for each method. Only one of them is issued per request server.
4. All response are in JSON format.
5. All request parameters are mandatory unless explicitly marked as [optional]

Appendix 3

Epsilon Digital Operational Error Codes

Operational errors occur when a procedure does not come as expected and fails. Data validation and connectivity issues could cause an operation to fail. In these cases the call is considered technically successful and the HTTP response status is 200 (OK).

The response of the API call contains the "errorCode", the "errorCategory" the "errorMessage" and the "errorSeverity" which describe the cause of the failure.

Error Code	Error Category	Method	Description
00010003	Technical ED	All	Subscription information is not valid
00080002	Business ED	All	ProcessId or ExternalSystemId is required
00080003	Business ED	All	The input provided does not correspond to a system registration
00010002	Business ED	All	Input data is not valid
00010004	Business ED	Get	Failure while retrieving invoice information
00010005	Business ED	Get	Invoice not available.
00010011	Business ED	Send	Invoice creation failed
00010014	Business ED	Get	Errors while processing invoice source data
00010015	Business ED	Get	Errors while validating invoice source data
00010020	Business ED	Get	Errors while mapping invoice source data to Epsilon Digital templates
00010022	Business ED	Get	Invoice with the same invoice code already submitted to Tax Authorities platform
00010028	Business ED	Finalize	Failure while verifying pdf file uploaded
00010029	Business TA	Get	Tax Authorities business errors. Tax Authorities error codes are included in "errorMessage"
00010030	Technical TA	Get	Tax Authorities technical errors. Tax Authorities error codes are included in "errorMessage"
00010032	Technical TA	Get	Tax Authorities connection failed
00010033	Business ED	Get	Errors while processing invoice source data for UBL

			2.1
00010034	Business ED	Get	Errors while processing invoice source data for UBL 2.1
00010037	Technical ED	All	Subscription is locked
00010039	Technical ED	Get	Print form could not be resolved. Only for transmissionType = 2.
00010040	Technical TA	Get	Transmission is currently suspended, due to technical issue on Tax Authorities platform
00010041	Business ED	Get	Document information related to delayed transmission is not valid
00010042	Business ED	GetFiles	Failure while getting files
00010043	Business ED	UploadFileRequest	Failure while requesting file SAS URI
00010050	Business ED	UploadFileRequest	File already exists
00010052	Technical ED	All	License failure by unauthorized user
00010053	Technical ED	Get	Issuer's Tax Identification Number validation failed
00010063	Business ED	RequestPayment	Failure while creating payment token
00010064	Business ED	Send/ SubmitPaymnet	No completed EFT-POS payments found
00010065	Business ED	Send/ SubmitPaymnet	EFT-POS payments invalid total paid amount
00010066	Business ED	Send/ SubmitPaymnet	Unexpected payments found
00010067	Business ED	Send/ SubmitPaymnet	Invalid payment request data
00010068	Business ED	CancelPayment	Failure while cancelling payment request
00150004	Business ED	Send/ RequestPayment/ Finalize	Not enough credits
00010077	Business ED	Send	Branch is locked
00160000	Business ED	ConnectDocuments	Document connection failed

Appendix 4

B2G Validation Error Messages

When the invoice publish type is B2G (2), a separate validation process takes place in order to verify that data conform to PEPPOL rules. Error messages are fixed (Greek language only) and provided by KED.

Technical Message	User Message
ΑΠΟΡΡΙΨΗ ΕΙΔΟΣ ΠΡΟΫΠΟΛΟΓΙΣΜΟΥ (Project_Reference)	ΑΠΟΡΡΙΨΗ ΕΙΔΟΥΣ ΠΡΟΫΠΟΛΟΓΙΣΜΟΥ (PROJECT REFERENCE)
ΑΠΟΡΡΙΨΗ ΑΔΑΜ	ΑΠΟΡΡΙΨΗ ΑΔΑΜ
ΑΠΟΡΡΙΨΗ ΕΝΑΡΙΘΜΟΣ	ΑΠΟΡΡΙΨΗ ΕΝΑΡΙΘΜΟΣ
ΓΕΝΙΚΗ ΑΠΟΡΡΙΨΗ ΚΕΔ	ΓΕΝΙΚΗ ΑΠΟΡΡΙΨΗ ΚΕΔ
ΤΟ ΠΕΔΙΟ INVOICE.INVOICE_NUMBER ΕΙΝΑΙ NULL (BT-1)	ΔΕΝ ΑΝΑΦΕΡΕΤΑΙ ΑΡΙΘΜΟΣ ΤΙΜΟΛΟΓΙΟΥ
ΤΟ ΠΕΔΙΟ INVOICE.PROJECT_REFERENCE_ID ΕΙΝΑΙ NULL (BT-11)	ΔΕΝ ΑΝΑΦΕΡΕΤΑΙ ΣΤΟΙΧΕΙΟ ΑΝΑΦΟΡΑΣ ΑΓΑΘΟΥ/ΕΡΓΟΥ (ΤΥΠΟΣ ΠΡΟΥΠΟΛΟΓΙΣΜΟΥ)
ΤΟ ΠΕΔΙΟ INVOICE.CONTRACT_REFERENCE_ID ΕΙΝΑΙ NULL (BT-12)	ΔΕΝ ΑΝΑΦΕΡΕΤΑΙ ΣΤΟΙΧΕΙΟ ΑΝΑΦΟΡΑΣ ΣΥΜΒΑΣΗΣ
ΤΟ ΠΕΔΙΟ SELLER_TAX_SCHEME.TAX_REGISTRATION_ID ΕΙΝΑΙ NULL (BT-31)	ΔΕΝ ΑΝΑΦΕΡΕΤΑΙ ΑΝΑΓΝΩΡΙΣΤΙΚΟ ΦΠΑ ΠΩΛΗΤΗ
ΤΟ ΠΕΔΙΟ SELLER.ELECTRONIC_ADDRESS_ID ΕΙΝΑΙ NULL (BT-34)	ΔΕΝ ΑΝΑΦΕΡΕΤΑΙ ΗΛΕΚΤΡΟΝΙΚΗ ΔΙΕΥΘΥΝΣΗ ΠΩΛΗΤΗ
ΤΟ ΠΕΔΙΟ BUYER.PARTY_ID ΕΙΝΑΙ NULL (BT-46)	ΔΕΝ ΑΝΑΦΕΡΕΤΑΙ ΚΩΔΙΚΟΣ ΑΝΑΘΕΤΟΥΣΑΣ ΑΡΧΗΣ
ΤΟ ΠΕΔΙΟ BUYER.TAX_REGISTRATION_ID ΕΙΝΑΙ NULL (BT-48)	ΔΕΝ ΑΝΑΦΕΡΕΤΑΙ ΑΝΑΓΝΩΡΙΣΤΙΚΟ ΦΠΑ ΑΓΟΡΑΣΤΗ
ΤΟ ΠΕΔΙΟ BUYER.ELECTRONIC_ADDRESS_ID ΕΙΝΑΙ NULL (BT-49)	ΔΕΝ ΑΝΑΦΕΡΕΤΑΙ ΗΛΕΚΤΡΟΝΙΚΗ ΔΙΕΥΘΥΝΣΗ ΑΓΟΡΑΣΤΗ

ΤΟ ΠΕΔΙΟ DELIVERY.DELIVER_TO_PARTY ΕΙΝΑΙ NULL (BT-70)	ΔΕΝ ΑΝΑΦΕΡΕΤΑΙ ΟΝΟΜΑ ΠΑΡΑΛΑΜΒΑΝΟΝΤΟΣ ΜΕΡΟΥΣ
ΤΟ ΠΕΔΙΟ DELIVERY.ADDRESS_LINE_1 ΕΙΝΑΙ NULL (BT-75)	ΔΕΝ ΑΝΑΦΕΡΕΤΑΙ ΔΙΕΥΘΥΝΣΗ ΠΑΡΑΔΟΣΗΣ
ΤΟ ΠΕΔΙΟ DELIVERY.LOCATION_CITY ΕΙΝΑΙ NULL (BT-77)	ΔΕΝ ΑΝΑΦΕΡΕΤΑΙ ΠΟΛΗ ΠΑΡΑΔΟΣΗΣ
ΤΟ ΠΕΔΙΟ DELIVERY.LOCATION_POST_CODE ΕΙΝΑΙ NULL (BT-78)	ΔΕΝ ΑΝΑΦΕΡΕΤΑΙ ΤΑΧΥΔΡΟΜΙΚΟΣ ΚΩΔΙΚΑΣ ΠΑΡΑΔΟΣΗΣ
ΤΟ ΠΕΔΙΟ TAX_TOTAL.VAT_AMOUNT ΕΙΝΑΙ NULL (BT-110)	ΔΕΝ ΑΝΑΦΕΡΕΤΑΙ ΣΥΝΟΛΙΚΟ ΠΟΣΟ ΦΠΑ ΕΓΓΡΑΦΟΥ
ΤΟ ΠΕΔΙΟ ITEM_CLASSIFICATION.CLASSIFICATION_ID ΕΙΝΑΙ NULL (BT-158)	ΔΕΝ ΑΝΑΦΕΡΕΤΑΙ ΑΝΑΓΝΩΡΙΣΤΙΚΟ ΤΑΞΙΝΟΜΗΣΗΣ ΣΤΟΙΧΕΙΟΥ
ΤΟ ΠΕΔΙΟ INVOICE.INVOICE_NUMBER ΔΕΝ ΕΙΝΑΙ ΕΓΚΥΡΟ (BT-1)	Ο ΑΡΙΘΜΟΣ ΤΙΜΟΛΟΓΙΟΥ ΔΕΝ ΕΙΝΑΙ ΕΓΚΥΡΟΣ
ΤΟ ΠΕΔΙΟ BUYER.TAX_REGISTRATION_ID ΔΕΝ ΕΙΝΑΙ ΕΓΚΥΡΟ (BT-48)	Ο ΦΠΑ ΑΓΟΡΑΣΤΗ ΔΕΝ ΥΠΑΡΧΕΙ ΣΤΟ ΦΟΡΟΛΟΓΙΚΟ ΜΗΤΡΩΟ
ΤΟ ΠΕΔΙΟ INVOICE_ARG.SELLER_TAX_REPR_TAX_REG_ID ΔΕΝ ΕΙΝΑΙ ΕΓΚΥΡΟ (BT-63)	Ο ΦΠΑ ΦΟΡΟΛΟΓΙΚΟΥ ΑΝΤΙΠΡΟΣΩΠΟΥ ΔΕΝ ΥΠΑΡΧΕΙ ΣΤΟ ΦΟΡΟΛΟΓΙΚΟ ΜΗΤΡΩΟ
ΤΟ ΠΕΔΙΟ INVOICE_ARG.SELLER_TAX_SCHEME_TBL.TAX_REGISTRATION_ID ΔΕΝ ΕΙΝΑΙ ΕΓΚΥΡΟ (BT-31)	Ο ΦΠΑ ΠΩΛΗΤΗ ΔΕΝ ΥΠΑΡΧΕΙ ΣΤΟ ΦΟΡΟΛΟΓΙΚΟ ΜΗΤΡΩΟ
ΤΟ ΠΕΔΙΟ BUYER.TAX_REGISTRATION_ID ΔΕΝ ΥΦΙΣΤΑΤΑΙ (BT-48)	Ο ΦΠΑ ΑΓΟΡΑΣΤΗ ΔΕΝ ΥΠΑΡΧΕΙ ΣΤΗ ΛΙΣΤΑ ΑΝΑΘΕΤΟΥΣΩΝ ΑΡΧΩΝ
ΤΟ ΠΕΔΙΟ BUYER.PARTY_ID ΔΕΝ ΥΦΙΣΤΑΤΑΙ (BT-46)	Ο ΚΩΔΙΚΟΣ ΑΝΑΘΕΤΟΥΣΑΣ ΑΡΧΗΣ ΔΕΝ ΥΠΑΡΧΕΙ ΣΤΗ ΛΙΣΤΑ ΑΝΑΘΕΤΟΥΣΩΝ ΑΡΧΩΝ
ΤΟ ΠΕΔΙΟ INVOICE.CONTRACT_REFERENCE_ID ΔΕΝ ΥΦΙΣΤΑΤΑΙ (BT-12)	ΤΟ ΣΤΟΙΧΕΙΟ ΑΝΑΦΟΡΑΣ ΣΥΜΒΑΣΗΣ ΔΕΝ ΥΦΙΣΤΑΤΑΙ
ΤΟ ΠΕΔΙΟ MARK ΔΕΝ ΥΠΑΡΧΕΙ (BT-122)	ΤΟ ΠΕΔΙΟ MARK ΔΕΝ ΥΠΑΡΧΕΙ
ΤΟ ΠΕΔΙΟ AUTH_CODE ΔΕΝ ΥΠΑΡΧΕΙ (BT-122)	ΤΟ ΠΕΔΙΟ AUTH_CODE ΔΕΝ ΥΠΑΡΧΕΙ
ΤΟ ΠΕΔΙΟ MARK ΔΕΝ ΕΙΝΑΙ ΕΓΚΥΡΟ (BT-122)	ΤΟ ΠΕΔΙΟ MARK ΔΕΝ ΕΙΝΑΙ ΕΓΚΥΡΟ
ΤΟ ΠΕΔΙΟ AUTH_CODE ΔΕΝ ΕΙΝΑΙ ΕΓΚΥΡΟ (BT-122)	ΤΟ ΠΕΔΙΟ AUTH_CODE ΔΕΝ ΕΙΝΑΙ ΕΓΚΥΡΟ
ΤΟ UID ΔΕΝ ΕΙΝΑΙ ΕΓΚΥΡΟ (BT-122)	ΤΟ UID ΔΕΝ ΕΙΝΑΙ ΕΓΚΥΡΟ
ΔΕΝ ΒΡΕΘΗΚΕ ΑΝΤΙΣΤΟΙΧΟ ΧΡΕΩΣΤΙΚΟ (BILLING REF)	ΔΕΝ ΒΡΕΘΗΚΕ ΤΟ ΑΝΤΙΣΤΟΙΧΟ ΧΡΕΩΣΤΙΚΟ ΤΙΜΟΛΟΓΙΟ

ΔΕΝ ΥΠΑΡΧΕΙ ΠΛΗΡΟΦΟΡΙΑ ΣΥΣΧΕΤΙΣΗΣ ΜΕ ΤΟΝ ΠΡΟΫΠΟΛΟΓΙΣΜΟ (ΜΗ ΣΥΣΧ. ΠΙΣΤΩΤΙΚΑ Η BILLING REFERENCE)	ΔΕΝ ΥΠΑΡΧΕΙ ΠΛΗΡΟΦΟΡΙΑ ΣΥΣΧΕΤΙΣΗΣ ΜΕ ΤΟΝ ΠΡΟΫΠΟΛΟΓΙΣΜΟ (ΔΕΝ ΥΠΑΡΧΕΙ ΔΥΝΑΤΟΤΗΤΑ ΔΡΟΜΟΛΟΓΗΣΗΣ)
ΛΑΝΘΑΣΜΕΝΗ ΠΛΗΡΟΦΟΡΙΑ ΣΥΣΧΕΤΙΣΗΣ ΜΕ ΠΡΟΫΠΟΛΟΓΙΣΜΟ (PROJECT_REFERENCE_ID)	ΛΑΝΘΑΣΜΕΝΗ ΠΛΗΡΟΦΟΡΙΑ ΣΥΣΧΕΤΙΣΗΣ ΜΕ ΠΡΟΫΠΟΛΟΓΙΣΜΟ
ΑΦΜ ΑΓΟΡΑΣΤΗ ΚΑΙ ΚΩΔΙΚΟΣ ΑΝΑΘΕΤΟΥΣΑΣ ΜΗ ΣΥΜΒΑΤΑ (BUYER_PARTY_ID, TAX_REGISTRATION_ID)	ΑΦΜ ΑΓΟΡΑΣΤΗ ΚΑΙ ΚΩΔΙΚΟΣ ΑΝΑΘΕΤΟΥΣΑΣ ΜΗ ΣΥΜΒΑΤΑ
ΤΟ ID ΤΟΥ ΤΙΜΟΛΟΓΙΟΥ ΠΡΕΠΕΙ ΝΑ ΕΧΕΙ ΕΛΛΗΝΙΚΟ FORMAT (BT-1)	ΤΟ ID ΤΟΥ ΤΙΜΟΛΟΓΙΟΥ ΠΡΕΠΕΙ ΝΑ ΕΧΕΙ ΕΛΛΗΝΙΚΟ FORMAT
ΤΙΜΟΛΟΓΙΟ ΓΙΑ ΕΠΑΝΥΠΟΒΟΛΗ (SOFT REJECT)	ΤΙΜΟΛΟΓΙΟ ΓΙΑ ΕΠΑΝΥΠΟΒΟΛΗ (SOFT REJECT)
ΕΧΟΥΝ ΑΛΛΟΙΩΘΕΙ ΣΤΟΙΧΕΙΑ ΤΟΥ ΤΙΜΟΛΟΓΙΟΥ (INTEGRITY CHECK FAIL)	ΕΧΟΥΝ ΑΛΛΟΙΩΘΕΙ ΣΤΟΙΧΕΙΑ ΤΟΥ ΤΙΜΟΛΟΓΙΟΥ (INTEGRITY CHECK FAIL)
ΟΜΑΔΑ ΠΕΔΙΩΝ ΕΠΑΝΥΠΟΒΟΛΗΣ BG-24 ΔΕΝ ΥΠΑΡΧΕΙ	ΔΕΝ ΥΠΑΡΧΕΙ ΟΜΑΔΑ ΠΕΔΙΩΝ ΕΠΑΝΥΠΟΒΟΛΗΣ ΤΙΜΟΛΟΓΙΟΥ
ΟΜΑΔΑ ΠΕΔΙΩΝ ΕΠΑΝΥΠΟΒΟΛΗΣ BG-24 ΥΠΑΡΧΕΙ ΕΝΩ ΤΟ ΤΙΜΟΛΟΓΙΟ ΔΕΝ ΕΧΕΙ ΣΗΜΑΝΘΕΙ ΓΙΑ ΕΠΑΝΥΠΟΒΟΛΗ	ΥΠΑΡΧΕΙ ΟΜΑΔΑ ΠΕΔΙΩΝ ΕΠΑΝΥΠΟΒΟΛΗΣ ΕΝΩ ΤΟ ΤΙΜΟΛΟΓΙΟ ΔΕΝ ΕΧΕΙ ΣΗΜΑΝΘΕΙ ΓΙΑ ΕΠΑΝΥΠΟΒΟΛΗ

Appendix 5

EFT-POS Service Providers

Code	Provider
1	CARDLINK (TCP-Socket)
201	CARDLINK (Common WebECR)
2	EURONET (WebECR)
202	EURONET (Common TCP-Socket)
3	MELLON
4	NEXI (Common WebECR)
204	NEXI (Common TCP-Socket)
304	NEXI (WebECR)
5	EDPS
6	VIVA
7	ADYEN
8	ePay
10	Attica Bank (Common TCP-Socket)
210	Attica Bank (Common WebECR)
11	PANCRETA Bank (Common TCP-Socket)
211	PANCRETA Bank (Common WebECR)
12	JCC (Common TCP-Socket)
212	JCC (Common WebECR)
13	PBT (Common TCP-Socket)
213	PBT (Common WebECR)
214	MyPOS (Common WebECR)
15	EveryPay
16	Planet
98	Other (HEX) – Other Provider using HEX encoding on Provider's Signature



99	Other (Base64) - Other Provider using Base64 encoding on Provider's Signature
----	---